

## Anti-Complement Factor H (beta-1H-Globulin) Antibody

### Product Details

<b>Available Variants</b>	100 uL (SKU:GAU 018-03-010) 400 uL (SKU:GAU 018-03-04) 1000 uL (SKU:GAU 018-03-1)
<b>Conjugate</b>	Unconjugated
<b>Isotype</b>	IgG1/k
<b>Clone</b>	C18/3
<b>Gene Name</b>	CFH
<b>Host Species</b>	Mouse
<b>Concentration</b>	1 mg/mL $\pm$ 15%
<b>Format</b>	Protein A or Protein G purified
<b>Physical State</b>	Liquid
<b>Buffer</b>	0.01 M phosphate buffer, pH 7.4, with 0.5 M NaCl and 15 mM sodium azide
<b>Production Notes</b>	BSA free
<b>Applications</b>	ELISA, IHC, WB
<b>Species Reactivity</b>	Human
<b>Immunogen</b>	Human Factor H
<b>Specificity</b>	GAU 018-03 is specific for complement factor H in human serum and plasma. Epitope specificity differs from that of GAU 020-03.
<b>Storage</b>	2-8°C without exposure to light
<b>UniProt ID</b>	<a href="#">P08603</a>
<b>Country of Origin</b>	United States
<b>Shipping</b>	Shipped on ice packs
<b>Expiration</b>	24 months from date of receipt

## Usage Statement

These antibodies are to be used as research laboratory reagents and are not for use as diagnostic or therapeutic reagents in humans.

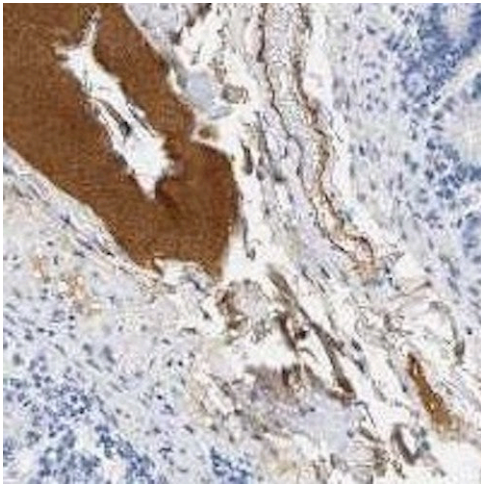
## Application Details

GAU 018-03 can be used as a capture antibody in sandwich ELISA with biotinylated GAU 020-03 as a detection antibody. This antibody pair specifically detects full length 150 kDa factor H and does not cross-react with the truncated forms of factor H. (1, 2)

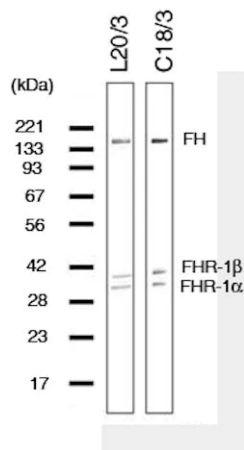
## NCBI Gene ID

3075

## Product Images



Immunohistochemistry detection of Complement factor H ( $\beta$ 1H-globulin) in Human duodenum tissue using Anti-Complement Factor H (beta-1H-Globulin) Antibody (Cat.GAU 018-03-010). Tissue was mounted and paraffin fixed. Heat induced antigen retrieval was performed using citrate buffer, heated, and then blocked. After washing, the primary antibody (Cat.GAU 018-03-010) was incubated with the sample.



Western blot detection of Complement factor H ( $\beta$ 1H-globulin) using Anti-Complement Factor H (beta-1H-Globulin) Antibody (Cat.GAU 018-03-010). Gel was loaded with Lane 1: human serum. Proteins were transferred to the membrane, blocked, and then washed with a buffer. Primary antibody was incubated with sample and then detected via ECL using a secondary antibody.



Created on 03. June 2026 | All information without guarantee