

Anti-Complement C3a/C3a(desArg)/C3 Antibody

Product Details

Available Variants	150 uL (SKU:GAU 017-01B-015)
Conjugate	Biotin
Isotype	IgG1/k
Clone	D17/1
Gene Name	C3
Host Species	Mouse
Concentration	1 mg/mL \pm 15%
Format	Protein A or Protein G purified
Physical State	Liquid
Buffer	0.01 M phosphate buffer, pH 7.4, with 0.14 M NaCl and 15 mM sodium azide
Production Notes	BSA free
Applications	ELISA, IHC
Species Reactivity	Human
Immunogen	Human C3a
Specificity	Recognizes an epitope that is present on human C3, C3a and C3a (desArg). Does not cross-react with C4a or C5a. GAU 017-01 recognizes different epitopes on the 9 kDa C3a than GAU 013-16. No reaction is seen with a synthetic octapeptide representing the C3a C-terminal.
Storage	2-8°C without exposure to light
UniProt ID	P01024
Country of Origin	United States
Shipping	Shipped on ice packs
Expiration	12 months from date of receipt

Usage Statement

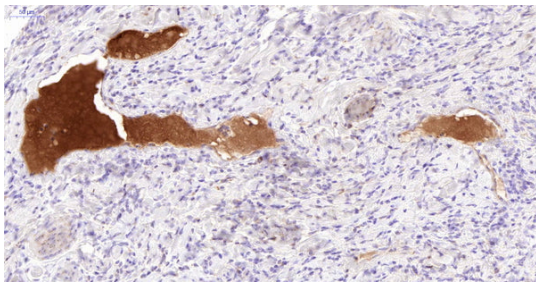
These antibodies are to be used as research laboratory reagents and are not for use as diagnostic or therapeutic reagents in humans.

Application Details

GAU 017-01 can be used as a biotinylated detection antibody in sandwich ELISA with GAU 013-16 capture antibody (1-5). Does not inhibit the biological activity of C3a. (1). GAU 017-01B was used in IHC on human appendix section.

NCBI Gene ID

718

Product Images

Immunohistochemistry detection of Complement C3a/C3a(desArg)/C3 in human appendix tissue using Anti-Complement C3a/C3a(desArg)/C3 Antibody (Cat.GAU 017-01B-015). Tissue was mounted and paraffin fixed. Heat induced antigen retrieval was performed using citrate buffer, heated, and then blocked. After washing, the primary antibody (Cat.GAU 017-01B-015) was incubated with the sample at a dilution of 1:30. Plasma of veins stained strongly.

Product Page URL: www.antibodiesinc.com/products/anti-complement-c3a-c3adesarg-c3-antibody-d17-1-gau-017-01b



Created on 03. June 2026 | All information without guarantee