

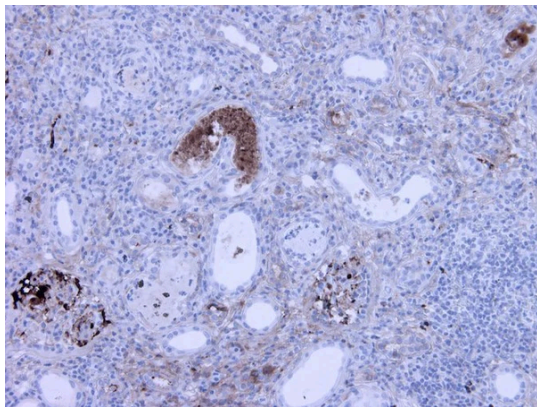
Anti-Complement C3a/C3a(desArg)/C3 Antibody

Product Details

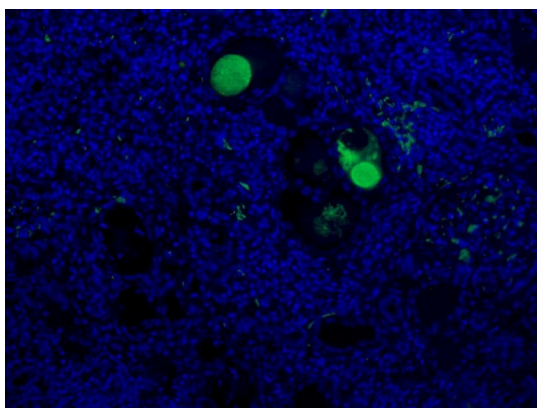
| | |
|---------------------------|---|
| Available Variants | 100 uL (SKU:GAU 013-16-010) 400 uL (SKU:GAU 013-16-04) 1000 uL (SKU:GAU 013-16-1) |
| Conjugate | Unconjugated |
| Isotype | IgG1/k |
| Clone | K13/16-5.7 |
| Gene Name | C3 |
| Host Species | Mouse |
| Concentration | 1 mg/mL \pm 15% |
| Format | Protein A or Protein G purified |
| Physical State | Liquid |
| Buffer | 0.01 M phosphate buffer, pH 7.4, with 0.5 M NaCl and 15 mM sodium azide |
| Production Notes | BSA free |
| Applications | ELISA, IF, IHC, WB |
| Dilution Ranges | IHC: 1:150 |
| Species Reactivity | Human |
| Immunogen | Human C3a |
| Specificity | GAU 013-16 is specific for human C3, C3a and C3a (desArg) (1) and does not cross-react with C4a or C5a. (2, 3) GAU 013-16 recognizes a different epitope on the 9 kDa C3a than GAU 017-01 (2, 3). No reaction is seen with a synthetic octapeptide representing the C3a C-terminal. (2) |
| Storage | 2-8°C without exposure to light |
| UniProt ID | P01024 |
| Country of Origin | United States |

| | |
|----------------------------|--|
| Shipping | Shipped on ice packs |
| Expiration | 24 months from date of receipt |
| Usage Statement | These antibodies are to be used as research laboratory reagents and are not for use as diagnostic or therapeutic reagents in humans. |
| Application Details | GAU 013-16 can be used as a capture antibody in sandwich ELISA with GAU 017-01 as a biotinylated detection antibody. (4, 5) GAU 013-16 can also be used to immunopurify C3a (3). GAU 013-16 effectively inhibits the biological activity of C3a in a guinea-pig platelet activation assay. (2) GAU 013-16 was used in IHC in formaline fixed paraffin embedded tissue with a dilution of 1:150. GAU 103-16 was used in IF with a dilution of 1:75. |
| NCBI Gene ID | 718 |

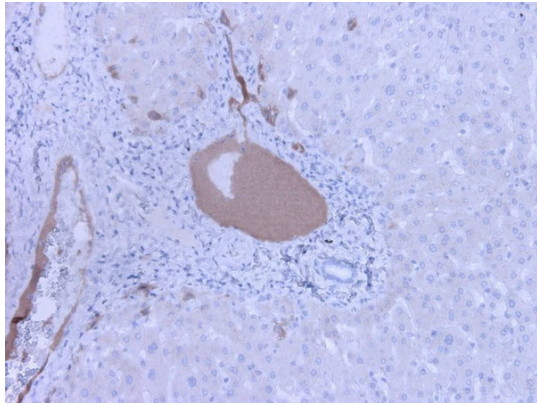
Product Images



Immunohistochemistry detection of Complement C3a/C3a(desArg)/C3 in human kidney tissue using Anti-Complement C3a/C3a(desArg)/C3 Antibody (Cat.GAU 013-16-010). Tissue was mounted and paraffin fixed. Heat induced antigen retrieval was performed using citrate buffer, heated, and then blocked. After washing, the primary antibody (Cat.GAU 013-16-010) was incubated with the sample at a dilution of 1:150. Strong staining of veins of nephritis kidney was seen.



Immunofluorescent staining of Complement C3a in plasma of nephritis human kidney using Anti-Complement C3a/C3a(desArg)/C3 Antibody (Cat.GAU 013-16-010). Cells were fixed with formaldehyde and permeabilized prior to staining. Primary antibody (GAU 013-16-010) was incubated with the cells at a dilution of 1:75.



Immunohistochemistry detection of Complement C3a/C3a(desArg)/C3 in human liver tissue using Anti-Complement C3a/C3a(desArg)/C3 Antibody (Cat.GAU 013-16-010). Tissue was mounted and paraffin fixed. Heat induced antigen retrieval was performed using citrate buffer, heated, and then blocked. After washing, the primary antibody (Cat.GAU 013-16-010) was incubated with the sample at a dilution of 1:150. Strong staining of plasma of veins in liver tissue.

Product Page URL: www.antibodiesinc.com/products/anti-complement-c3a-c3adesarg-c3-antibody-k13-16-5-7-gau-013-16



Created on 03. June 2026 | All information without guarantee