

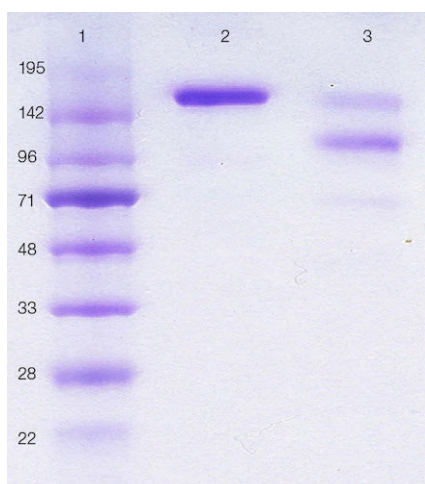
Anti-Human IgE (non-immune) Antibody

Product Details

Available Variants	100 uL (SKU:DIA HE1-010) 400 uL (SKU:DIA HE1-04) 1000 uL (SKU:DIA HE1-1)
Conjugate	Unconjugated
Isotype	IgE/k
Clone	HE1
Gene Name	IGHE
Host Species	Human
Concentration	1 mg/mL \pm 15%
Format	The human IgE is purified by Protein L chromatography. The remaining contaminants are mainly components from Foetal Bovine Serum
Physical State	Liquid
Buffer	0.01 M phosphate buffer, pH 7.4, containing 0.15 M NaCl.
Production Notes	Endotoxin level < 25 EU/mg
Applications	ELISA, IHC, WB
Species Reactivity	Human
Immunogen	Non-immune
Specificity	This product is purified human IgE with kappa light chains produced in vitro from a monoclonal hybridoma. Original material is obtained from a healthy donor tested negative by US-FDA approved tests against HIV, HCV and Hepatitis B. The purity of the human IgE is > 90%, tested by SDS-PAGE. As the IgE comes from a monoclonal cell line, there is no contamination of antibodies of other isotypes.
Storage	For long term storage, -18 to -22°C is recommended, but it may be stored for short term use at 2 to 8°C without exposure to light. The expiry date refers to storage at -18 to -22°C.

UniProt ID	<u>P01854</u>
Country of Origin	United States
Shipping	Shipped on ice packs
Expiration	24 months from date of receipt
Usage Statement	These antibodies are to be used as research laboratory reagents and are not for use as diagnostic or therapeutic reagents in humans.
Application Details	This antibody is well suited as a standard in IgE quantifying assays due to its very low batch-to-batch variation.
NCBI Gene ID	3497

Product Images



Lane 1 shows molecular weight markers, lane 2 DIA HE1 purified human IgE 185 kDa, lane 3 shows IgE, purified from human serum from a myeloma patient.

Product Page URL: www.antibodiesinc.com/products/anti-human-ige-non-immune-antibody-he1-dia-he1



Created on 03. June 2026 | All information without guarantee