

## Anti-Type III Collagen Antibody

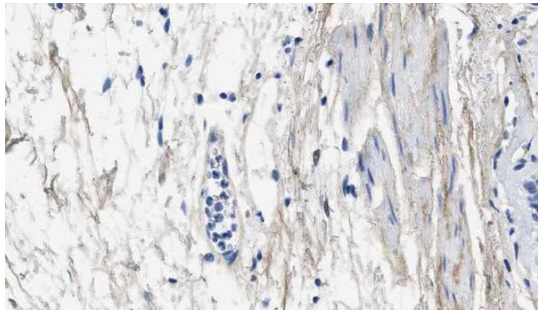
### Product Details

<b>Available Variants</b>	100 uL (SKU:CSI 007-01-010) 400 uL (SKU:CSI 007-01-04) 1000 uL (SKU:CSI 007-01-1)
<b>Conjugate</b>	Unconjugated
<b>Isotype</b>	IgG1/k
<b>Clone</b>	1E7-D7/Col3
<b>Gene Name</b>	COL3A1
<b>Host Species</b>	Mouse
<b>Concentration</b>	1 mg/mL $\pm$ 15%
<b>Format</b>	Protein A or Protein G purified
<b>Physical State</b>	Liquid
<b>Buffer</b>	0.01 M phosphate buffer, pH 7.4, with 0.5 M NaCl and 15 mM sodium azide
<b>Production Notes</b>	BSA free
<b>Applications</b>	ELISA, IHC, WB
<b>Species Reactivity</b>	Canine, Human, Kangaroo
<b>Immunogen</b>	Acid-digested pepsin soluble human type III collagen
<b>Specificity</b>	CSI 007-01 is highly specific for type III collagen. It has been shown to have no cross-reactivity with type I and V collagens by ELISA and immunoblotting. There is no evidence for cross-reactivity with other connective tissue proteins (laminin, fibronectin, elastin). Epitope is located approximately 100nm from the N-terminal of the molecule.
<b>Molecular Weight</b>	139 kDa
<b>Storage</b>	2-8°C without exposure to light
<b>UniProt ID</b>	<a href="#">P02461</a>

<b>Country of Origin</b>	United States
<b>Shipping</b>	Shipped on ice packs
<b>Expiration</b>	24 months from date of receipt
<b>Usage Statement</b>	These antibodies are to be used as research laboratory reagents and are not for use as diagnostic or therapeutic reagents in humans.
<b>Application Details</b>	CSI 007-01 can be used for detection of collagens by ELISA. In immunoblotting CSI 007-01 detects type III collagen only in its native triple helix form. CSI 007-01 has been used successfully for immunohistology on frozen unfixed sections of human (1) and kangaroo (2) skin, and of new dog tissue associated with biomaterial implants. (3, 4) If fixation of tissue is required, acetone or ethanol is recommended. (1, 2, 3, 4) Please consult <a href="http://www.proteinatlas.org">www.proteinatlas.org</a>
<b>NCBI Gene ID</b>	1281

---

## Product Images



Immunohistochemistry detection of Type III Collagen in human bronchus tissue using Anti-Type III Collagen Antibody (Cat.CSI 007-01-010). Tissue was mounted and paraffin fixed. Heat induced antigen retrieval was performed using citrate buffer, heated, and then blocked. After washing, the primary antibody (Cat.CSI 007-01-010) was incubated with the sample.

---

Product Page URL: [www.antibodiesinc.com/products/anti-type-iii-collagen-antibody-1e7-d7-col3-csi-007-01](http://www.antibodiesinc.com/products/anti-type-iii-collagen-antibody-1e7-d7-col3-csi-007-01)



Created on 03. June 2026 | All information without guarantee