

## Anti-Complement C4c Antibody

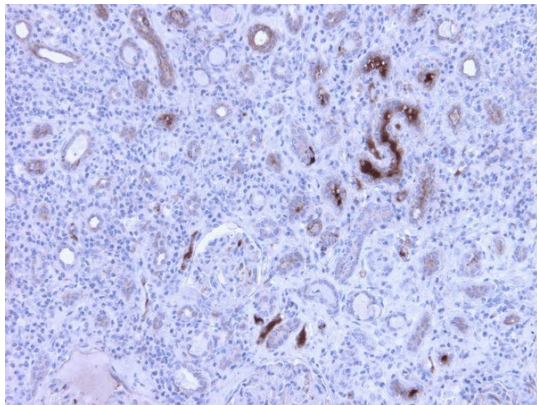
### Product Details

<b>Available Variants</b>	100 uL (SKU:CAM 072-18-010) 400 uL (SKU:CAM 072-18-04) 1000 uL (SKU:CAM 072-18-1)
<b>Conjugate</b>	Unconjugated
<b>Isotype</b>	IgG2b/k
<b>Clone</b>	99-72-18
<b>Gene Name</b>	C4A
<b>Host Species</b>	Mouse
<b>Concentration</b>	1 mg/mL $\pm$ 15%
<b>Format</b>	Protein A or Protein G purified
<b>Physical State</b>	Liquid
<b>Buffer</b>	0.01 M phosphate buffer, pH 7.4, with 0.5 M NaCl and 15 mM sodium azide
<b>Production Notes</b>	BSA free
<b>Applications</b>	ELISA, IF, IHC, WB
<b>Dilution Ranges</b>	IHC: 1:600
<b>Species Reactivity</b>	Human
<b>Immunogen</b>	Synthetic peptide consisting of the last 15C-terminal residues of the C4c a4-domain (Cys-EELVYELNPLDHRGR).`
<b>Specificity</b>	CAM 072-18 binds human complement factor C4c.
<b>Molecular Weight</b>	g-chain (30 kDa), a b-chain (75 kDa), and two a-domains denoted a3 (27 kDa) and a4 (14 kDa)
<b>Storage</b>	2-8°C without exposure to light
<b>UniProt ID</b>	<a href="#">P0C0L4</a>

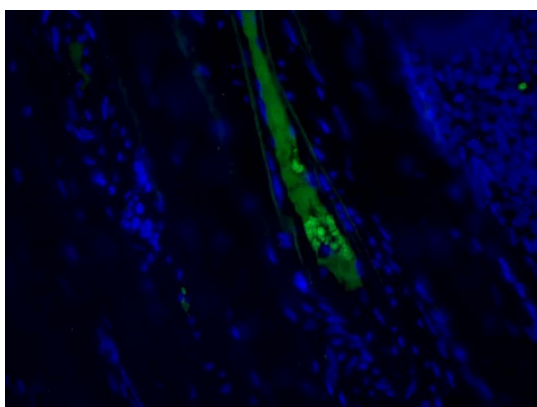
<b>Country of Origin</b>	United States
<b>Shipping</b>	Shipped on ice packs
<b>Expiration</b>	24 months from date of receipt
<b>Usage Statement</b>	These antibodies are to be used as research laboratory reagents and are not for use as diagnostic or therapeutic reagents in humans.
<b>Application Details</b>	CAM 072-18 was used in ELISA. (1) CAM 072-18 was used in IHC in formaline fixed paraffin embedded tissue with a dilution of 1:600. CAM 072-18 was used in IF with a dilution of 1:200.
<b>NCBI Gene ID</b>	720

---

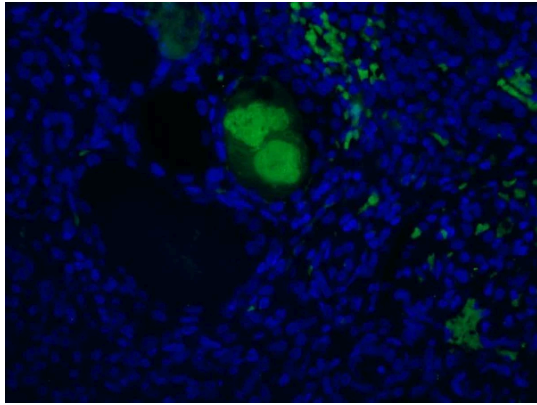
## Product Images



Immunohistochemistry detection of Complement C4c in human kidney tissue using Anti-Complement C4c Antibody (Cat.CAM 072-18-010). Tissue was mounted and paraffin fixed. Heat induced antigen retrieval was performed using citrate buffer, heated, and then blocked. After washing, the primary antibody (Cat.CAM 072-18-010) was incubated with the sample at a dilution of 1:600. Strong staining of veins of nephritis kidney.



Immunofluorescent staining of Complement C4c in plasma in lumen of veins of human tonsil tissue using Anti-Complement C4c Antibody (Cat.CAM 072-18-010). Cells were fixed with formaldehyde and permeabilized prior to staining. Primary antibody (CAM 072-18-010) was incubated with the cells at a dilution of 1:200.



Immunofluorescent staining of Complement C4c in Veins of human kidney with nephritis using Anti-Complement C4c Antibody (Cat.CAM 072-18-010). Cells were fixed with formaldehyde and permeabilized prior to staining. Primary antibody (CAM 072-18-010) was incubated with the cells at a dilution of 1:200.

---

Product Page URL: [www.antibodiesinc.com/products/anti-complement-c4c-antibody-99-72-18-cam-072-18](http://www.antibodiesinc.com/products/anti-complement-c4c-antibody-99-72-18-cam-072-18)



Created on 03. June 2026 | All information without guarantee