

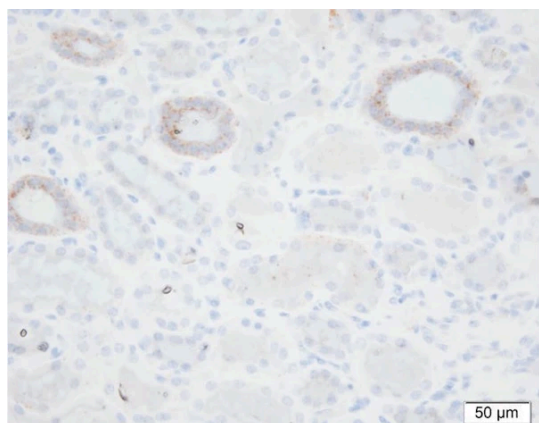
Anti-SCNN1G/Gamma-Subunit Epithelial Sodium Channel Antibody

Product Details

Available Variants	100 uL (SKU:CAM 035-01-010) 400 uL (SKU:CAM 035-01-04) 1000 uL (SKU:CAM 035-01-1)
Conjugate	Unconjugated
Isotype	IgG1/k
Clone	11-35-1
Gene Name	SCNN1G
Host Species	Mouse
Concentration	1 mg/mL \pm 15%
Format	Protein A or Protein G purified
Physical State	Liquid
Buffer	0.01 M phosphate buffer, pH 7.4, with 0.5 M NaCl and 15 mM sodium azide
Production Notes	BSA free
Applications	ELISA, IF, IHC, WB
Species Reactivity	Human
Immunogen	Synthetic peptide sequence: VGGSIIHKAC
Specificity	CAM 035-01 is specific for the neoepitope generated after proteolytic cleavage of human γ ENaC and recognizes the C-terminal fragment starting from amino acid residue 182.
Molecular Weight	74 kDa
Storage	2-8°C without exposure to light
UniProt ID	P51170

Country of Origin	United States
Shipping	Shipped on ice packs
Expiration	24 months from date of receipt
Usage Statement	These antibodies are to be used as research laboratory reagents and are not for use as diagnostic or therapeutic reagents in humans.
Application Details	CAM 035-01 was used in ELISA.
NCBI Gene ID	6340

Product Images



Immunohistochemistry detection of SCNN1G/Gamma-Subunit Epithelial Sodium Channel in human kidney tissue using Anti-SCNN1G/Gamma-Subunit Epithelial Sodium Channel Antibody (Cat.CAM 035-01-010). Tissue was mounted and paraffin fixed. Heat induced antigen retrieval was performed using citrate buffer, heated, and then blocked. After washing, the primary antibody (Cat.CAM 035-01-010) was incubated with the sample. Courtesy of Per Svenningsen, PhD.

Product Page URL: www.antibodiesinc.com/products/anti-scnn1g-enac-antibody-11-35-1-cam-035-01



Created on 03. June 2026 | All information without guarantee