

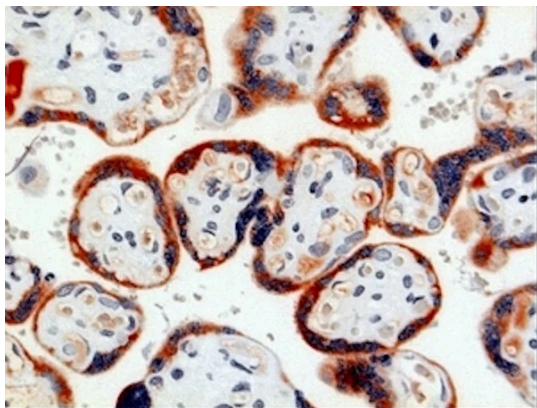
Anti-Pregnancy Associated Plasma Protein A (PAPP-A) Antibody

Product Details

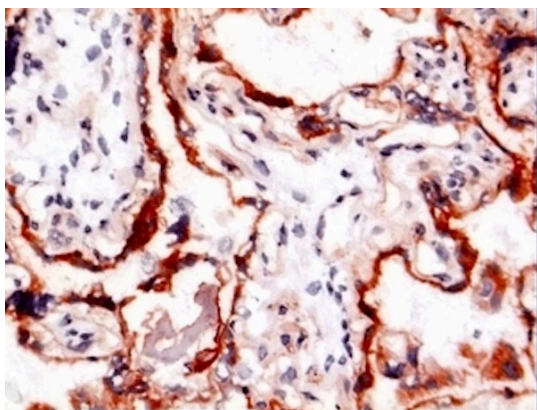
Available Variants	100 uL (SKU:BTE 004-09-010) 400 uL (SKU:BTE 004-09-04) 1000 uL (SKU:BTE 004-09-1)
Conjugate	Unconjugated
Isotype	IgG2b/k
Clone	9
Gene Name	PAPPA
Host Species	Mouse
Concentration	1 mg/mL \pm 15%
Format	Protein A or Protein G purified
Physical State	Liquid
Buffer	0.01 M phosphate buffer, pH 7.4, with 0.5 M NaCl and 15 mM sodium azide
Production Notes	BSA free
Applications	ELISA, IHC, WB
Species Reactivity	Human
Immunogen	Purified human PAPP-A
Specificity	BTE 004-09 is specific for native human PAPP-A. Heat and SDS denatured PAPP-A is also recognized, but not acid treated PAPP-A. The epitope of BTE 004-09 is different from ABS 006-01 and ABS 006-24. The epitope is located on the PAPP-A subunit of the heterotetramer.
Molecular Weight	500 kDa (tetramer), 180 kDa (monomer)
Storage	2-8°C without exposure to light
UniProt ID	Q13219

Country of Origin	United States
Shipping	Shipped on ice packs
Expiration	24 months from date of receipt
Usage Statement	These antibodies are to be used as research laboratory reagents and are not for use as diagnostic or therapeutic reagents in humans.
Application Details	In sandwich ELISA the optimal combination is BTE 004-09 used as coating antibody and biotinylated ABS 006-24 used as a detection antibody. BTE 004-09 can also be used as a detection antibody in sandwich ELISA in combination with a polyclonal antibody towards PAPP-A in coat. BTE 004-09 detect both reduced and unreduced PAPP-A in Western Blotting, though the reaction to unreduced is less than that of ABS 006-01 and ABS 006-24.
NCBI Gene ID	5069

Product Images



Immunohistochemistry detection of Pregnancy associated plasma protein A (PAPP-A) in human placenta tissue using Anti-Pregnancy Associated Plasma Protein A (PAPP-A) Antibody (Cat.BTE 004-09-010). Tissue was mounted and paraffin fixed. Heat induced antigen retrieval was performed using citrate buffer, heated, and then blocked. After washing, the primary antibody (Cat.BTE 004-09-010) was incubated with the sample. Staining is restricted to the syncytiotrophoblast of the chorionic villi.



Immunohistochemistry detection of Pregnancy associated plasma protein A (PAPP-A) in human placenta tissue using Anti-Pregnancy Associated Plasma Protein A (PAPP-A) Antibody (Cat.BTE 004-09-010). Tissue was mounted and paraffin fixed. Heat induced antigen retrieval was performed using citrate buffer, heated, and then blocked. After washing, the primary antibody (Cat.BTE 004-09-010) was incubated with the sample. Staining is restricted to the syncytiotrophoblast of the chorionic villi.



Created on 03. June 2026 | All information without guarantee