

## Anti-Placental Protein 14 Antibody

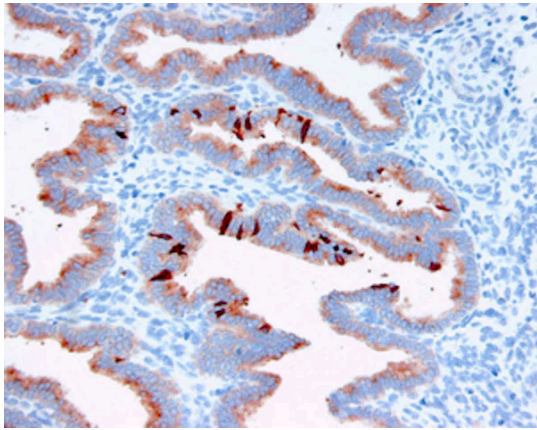
### Product Details

<b>Available Variants</b>	100 uL (SKU:BTE 001-16-010) 400 uL (SKU:BTE 001-16-04) 1000 uL (SKU:BTE 001-16-1)
<b>Conjugate</b>	Unconjugated
<b>Isotype</b>	IgG1/k
<b>Clone</b>	16
<b>Gene Name</b>	PAEP
<b>Host Species</b>	Mouse
<b>Concentration</b>	1 mg/mL $\pm$ 15%
<b>Format</b>	Protein A or Protein G purified
<b>Physical State</b>	Liquid
<b>Buffer</b>	0.01 M phosphate buffer, pH 7.4, with 0.5 M NaCl and 15 mM sodium azide
<b>Production Notes</b>	BSA free
<b>Applications</b>	ELISA, IHC
<b>Species Reactivity</b>	Human
<b>Immunogen</b>	Placental protein 14 (glycodelin A) purified from second trimester amniotic fluid
<b>Specificity</b>	BTE 001-16 is specific for human PP14 protein 14 (human, PP14, glycodelin A). Epitope differs from BTE 001-13
<b>Molecular Weight</b>	20 kDa
<b>Storage</b>	2-8°C without exposure to light
<b>UniProt ID</b>	<a href="#">P09466</a>
<b>Country of Origin</b>	United States
<b>Shipping</b>	Shipped on ice packs

<b>Expiration</b>	24 months from date of receipt
<b>Usage Statement</b>	These antibodies are to be used as research laboratory reagents and are not for use as diagnostic or therapeutic reagents in humans.
<b>Application Details</b>	BTE 001-16 reacts strongly to human PP14 in sandwich ELISA in combination with a polyclonal antibody. When staining formalin-fixed paraffin-embedded endometrial tissue from the late secretory phase, staining is restricted to the glandular cells. (2+3)
<b>NCBI Gene ID</b>	5047

---

## Product Images



Immunohistochemistry detection of Placental protein 14 in human endometrial tissue using Anti-Placental Protein 14 Antibody (Cat.BTE 001-16-010). Tissue was mounted and paraffin fixed. Heat induced antigen retrieval was performed using citrate buffer, heated, and then blocked. After washing, the primary antibody (Cat.BTE 001-16-010) was incubated with the sample. Staining is restricted to the glandular cells from the late secretory phase.

---

Product Page URL: [www.antibodiesinc.com/products/anti-placental-protein-14-antibody-16-bte-001-16](http://www.antibodiesinc.com/products/anti-placental-protein-14-antibody-16-bte-001-16)



Created on 03. June 2026 | All information without guarantee