

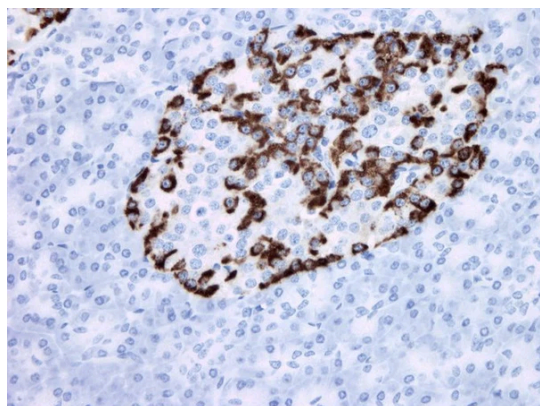
Anti-Glucagon Antibody

Product Details

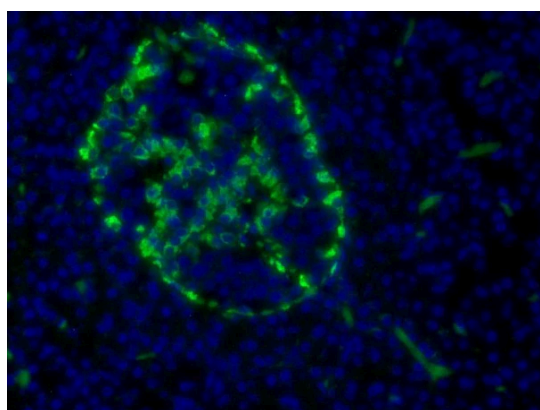
Available Variants	100 uL (SKU:ABS 061-09-010) 400 uL (SKU:ABS 061-09-04) 1000 uL (SKU:ABS 061-09-1)
Conjugate	Unconjugated
Isotype	IgG1/k
Clone	9
Gene Name	GCG
Host Species	Mouse
Concentration	1 mg/mL \pm 15%
Format	Protein A or Protein G purified
Physical State	Liquid
Buffer	0.01 M phosphate buffer, pH 7.4, with 0.5 M NaCl and 15 mM sodium azide
Production Notes	BSA free
Applications	ELISA, IF, IHC
Dilution Ranges	IHC: 1:8000
Species Reactivity	Human
Immunogen	Synthetic C-terminal fragment of glucagon coupled to carrier
Specificity	ABS 061-09 binds human glucagon. Cross-reacts less than 5% with oxyntomodulin. The epitope lies within the C-terminal region of glucagon.
Molecular Weight	20.4 kDa
Storage	2-8°C without exposure to light
UniProt ID	P01275
Country of Origin	United States

Shipping	Shipped on ice packs
Expiration	24 months from date of receipt
Usage Statement	These antibodies are to be used as research laboratory reagents and are not for use as diagnostic or therapeutic reagents in humans.
Application Details	ABS 061-09 binds free glucagon in solution. ABS 061-09 when used as a capture antibody forms a sandwich ELISA pair with ABS 058-08 as a biotinylated detection antibody for measuring glucagon. ABS 061-09 was used in IHC in formaline fixed paraffin embedded tissue with a dilution of 1:8000. ABS 061-09 was used in IF with a dilution of 1:4000.
NCBI Gene ID	2641

Product Images



Anti-Glucagon Antibody



Anti-Glucagon Antibody



Created on 03. June 2026 | All information without guarantee