

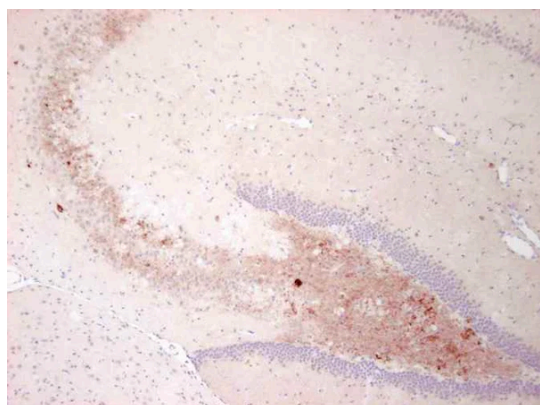
Anti-Neuropeptide Y Antibody

Product Details

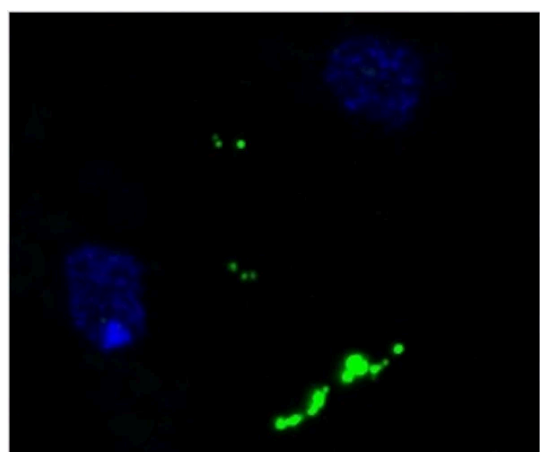
Available Variants	100 uL (SKU:ABS 028-08-010) 400 uL (SKU:ABS 028-08-04) 1000 uL (SKU:ABS 028-08-1)
Conjugate	Unconjugated
Isotype	IgG1/k
Clone	8
Gene Name	NPY
Host Species	Mouse
Concentration	1 mg/mL \pm 15%
Format	Protein A or Protein G purified
Physical State	Liquid
Buffer	0.01 M phosphate buffer, pH 7.4, with 0.5 M NaCl and 15 mM sodium azide
Production Notes	BSA free
Applications	ELISA, IF, IHC
Dilution Ranges	IHC: 1:1000
Species Reactivity	Human, Mouse
Immunogen	Synthetic human/rat neuropeptide Y
Specificity	ABS 028-08 binds full length human/rat NPY. Cross-reactivity with NPY (1-24), NPY (18-36), PYY or PP was <0.2%. The epitope of ABS 028-08 is probably around the mid-molecular region, NPY (18-24).
Molecular Weight	11 kDa (precursor/processed), 4 kDa (mature peptide)
Storage	2-8°C without exposure to light
UniProt ID	P01303

Country of Origin	United States
Shipping	Shipped on ice packs
Expiration	24 months from date of receipt
Usage Statement	These antibodies are to be used as research laboratory reagents and are not for use as diagnostic or therapeutic reagents in humans.
Application Details	ABS 028-08 binds free NPY in solution and ABS 028-08 reacts in ELISA directly with NPY coated directly onto the microtiter well. ABS 028-08 works well in IHC on paraffin embedded tissue sections.
NCBI Gene ID	4852

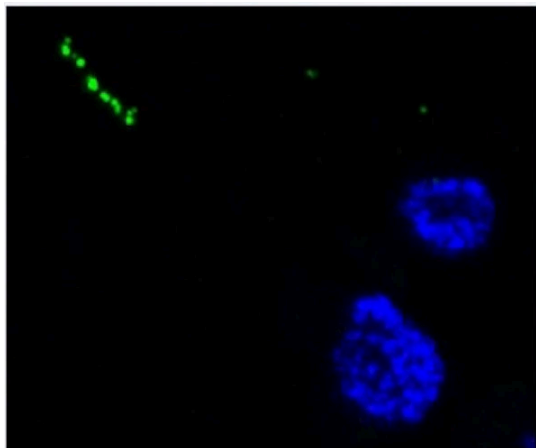
Product Images



Immunohistochemistry detection of Neuropeptide Y in mouse brain tissue using Anti-Neuropeptide Y Antibody (Cat.ABS 028-08-010). Tissue was mounted and paraffin fixed. Heat induced antigen retrieval was performed using citrate buffer, heated, and then blocked. After washing, the primary antibody (Cat.ABS 028-08-010) was incubated with the sample at a dilution of 1:1000. Staining of fibres in the hilus of the hippocampus from a mouse suffering an epileptic attack.



Immunofluorescent staining of Neuropeptide Y in human cerebral cortex using Anti-Neuropeptide Y Antibody (Cat.ABS 028-08-010). Cells were fixed with formaldehyde and permeabilized prior to staining. Primary antibody (ABS 028-08-010) was incubated with the cells at a dilution of 1:10.



Immunofluorescent staining of Neuropeptide Y in human cerebral cortex using Anti-Neuropeptide Y Antibody (Cat.ABS 028-08-010). Cells were fixed with formaldehyde and permeabilized prior to staining. Primary antibody (ABS 028-08-010) was incubated with the cells at a dilution of 1:10.

Product Page URL: www.antibodiesinc.com/products/anti-neuropeptide-y-antibody-8-abs-028-08



Created on 03. June 2026 | All information without guarantee