

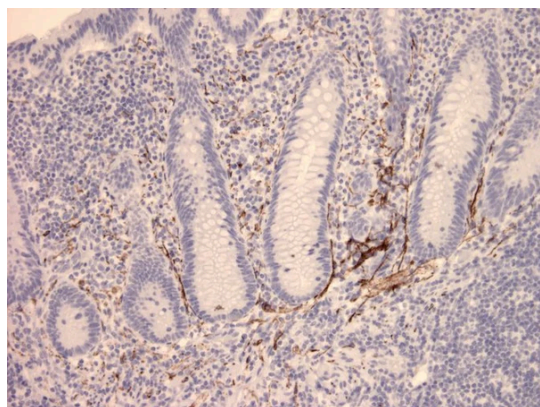
Anti-Vasoactive Intestinal Peptide Antibody

Product Details

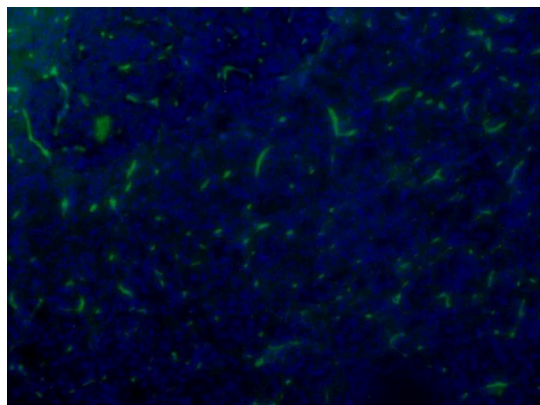
Available Variants	100 uL (SKU:ABS 023-02-010) 400 uL (SKU:ABS 023-02-04) 1000 uL (SKU:ABS 023-02-1)
Conjugate	Unconjugated
Isotype	IgG1/k
Clone	2
Gene Name	VIP
Host Species	Mouse
Concentration	1 mg/mL \pm 15%
Format	Protein A or Protein G purified
Physical State	Liquid
Buffer	0.01 M phosphate buffer, pH 7.4, with 0.5 M NaCl and 15 mM sodium azide
Production Notes	BSA free
Applications	ELISA, IF, IHC, WB
Dilution Ranges	IHC: 1:100 ELISA: 1:1000
Species Reactivity	Bovine, Human
Immunogen	Vasoactive intestinal peptide
Specificity	ABS 023-02 binds to human, bovine, porcine or rat VIP, but does not bind to PHM or PACAP.
Molecular Weight	16 kDa (recombinant/precursor), 4 kDa (native/active)
Storage	2-8°C without exposure to light
UniProt ID	P01282

Country of Origin	United States
Shipping	Shipped on ice packs
Expiration	24 months from date of receipt
Usage Statement	These antibodies are to be used as research laboratory reagents and are not for use as diagnostic or therapeutic reagents in humans.
Application Details	A dilution guideline of 1/1000 applies to VIP coated directly at 2 µg/mL. For glutaraldehyde-linked VIP-ovalbumin (molar ratio 4:1) coated at 2 µg/mL, the dilution is 1/32,000. ABS 023-02 was used in IHC in formaline fixed paraffin embedded tissue with a dilution of 1:100. ABS 023-02 was used in IF with a dilution of 1:100.
NCBI Gene ID	7432

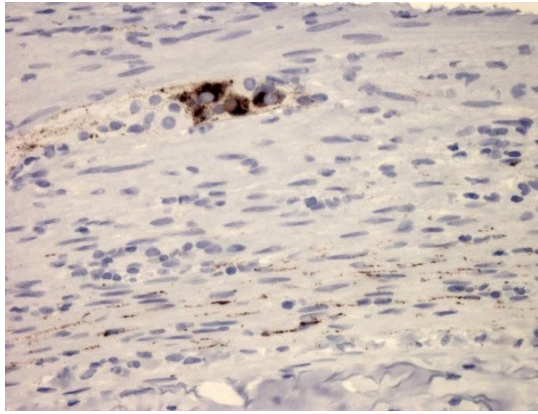
Product Images



Immunohistochemistry detection of Vasoactive Intestinal Peptide in human appendix tissue using Anti-Vasoactive Intestinal Peptide Antibody (Cat.ABS 023-02-010). Tissue was mounted and paraffin fixed. Heat induced antigen retrieval was performed using citrate buffer, heated, and then blocked. After washing, the primary antibody (Cat.ABS 023-02-010) was incubated with the sample at a dilution of 1:100.



Immunofluorescent staining of Vasoactive Intestinal Peptide in nerves of exocrine part of human pancreas using Anti-Vasoactive Intestinal Peptide Antibody (Cat.ABS 023-02-010). Cells were fixed with formaldehyde and permeabilized prior to staining. Primary antibody (ABS 023-02-010) was incubated with the cells at a dilution of 1:100.



Immunohistochemistry detection of Vasoactive Intestinal Peptide in human appendix tissue using Anti-Vasoactive Intestinal Peptide Antibody (Cat.ABS 023-02-010). Tissue was mounted and paraffin fixed. Heat induced antigen retrieval was performed using citrate buffer, heated, and then blocked. After washing, the primary antibody (Cat.ABS 023-02-010) was incubated with the sample at a dilution of 1:100.

Product Page URL: www.antibodiesinc.com/products/anti-vasoactive-intestinal-peptide-antibody-2-abs-023-02



Created on 03. June 2026 | All information without guarantee