

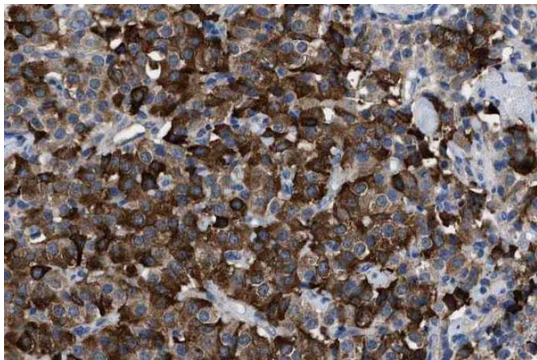
Anti-Leptin Antibody

Product Details

Available Variants	100 uL (SKU:ABS 022-03-010) 400 uL (SKU:ABS 022-03-04) 1000 uL (SKU:ABS 022-03-1)
Conjugate	Unconjugated
Isotype	IgG1/k
Clone	3
Gene Name	LEP
Host Species	Mouse
Concentration	1 mg/mL \pm 15%
Format	Protein A or Protein G purified
Physical State	Liquid
Buffer	0.01 M phosphate buffer, pH 7.4, with 0.5 M NaCl and 15 mM sodium azide
Production Notes	BSA free
Applications	ELISA, IHC
Species Reactivity	Human
Immunogen	Recombinant human leptin
Specificity	ABS 022-03 binds human leptin. The epitope of ABS 022-03 differs from the epitope of ABS 022-11 but overlaps with the epitope of ABS 022-06.
Molecular Weight	16 kDa
Storage	2-8°C without exposure to light
UniProt ID	P41159
Country of Origin	United States
Shipping	Shipped on ice packs

Expiration	24 months from date of receipt
Usage Statement	These antibodies are to be used as research laboratory reagents and are not for use as diagnostic or therapeutic reagents in humans.
Application Details	ABS 022-03 binds free leptin in solution. In sandwich ELISA, ABS 022-03 works as a capture antibody with biotinylated ABS 022-11 as a detection antibody.
NCBI Gene ID	3952

Product Images



Immunohistochemistry detection of Leptin in human malignant carcinoid tissue using Anti-Leptin Antibody (Cat.ABS 022-03-010). Tissue was mounted and paraffin fixed. Heat induced antigen retrieval was performed using citrate buffer, heated, and then blocked. After washing, the primary antibody (Cat.ABS 022-03-010) was incubated with the sample.

Product Page URL: www.antibodiesinc.com/products/anti-leptin-antibody-3-abs-022-03



Created on 03. June 2026 | All information without guarantee