

## Anti-Peptide Histidine Methionine Antibody

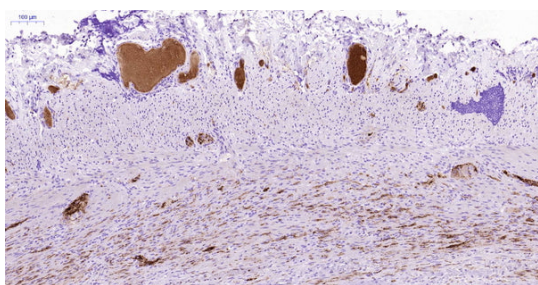
### Product Details

<b>Available Variants</b>	100 uL (SKU:ABS 020-03-010) 400 uL (SKU:ABS 020-03-04) 1000 uL (SKU:ABS 020-03-1)
<b>Conjugate</b>	Unconjugated
<b>Isotype</b>	IgG2a/k
<b>Clone</b>	3
<b>Gene Name</b>	VIP
<b>Host Species</b>	Mouse
<b>Concentration</b>	1 mg/mL $\pm$ 15%
<b>Format</b>	Protein A or Protein G purified
<b>Physical State</b>	Liquid
<b>Buffer</b>	0.01 M phosphate buffer, pH 7.4, with 0.5 M NaCl and 15 mM sodium azide
<b>Production Notes</b>	BSA free
<b>Applications</b>	ELISA, IHC
<b>Dilution Ranges</b>	IHC: 1:200 ELISA: 1:2000
<b>Species Reactivity</b>	Human
<b>Immunogen</b>	Synthetic human peptide histidine-methionine
<b>Specificity</b>	ABS 020-03 binds human PHM and cross-reacts with PACAP (approximately 12%; incomplete, non-parallel inhibition). ABS 020-03 does not cross-react with GLP-1, GLP-2, VIP or glucagon.
<b>Molecular Weight</b>	3 kDa
<b>Storage</b>	2-8°C without exposure to light
<b>UniProt ID</b>	<a href="#">P01282</a>

<b>Country of Origin</b>	United States
<b>Shipping</b>	Shipped on ice packs
<b>Expiration</b>	24 months from date of receipt
<b>Usage Statement</b>	These antibodies are to be used as research laboratory reagents and are not for use as diagnostic or therapeutic reagents in humans.
<b>Application Details</b>	ABS 020-03 binds free PHM in solution. An ELISA dilution guideline of 1/2000 applies to PHM coated directly at 2 µg/mL. For glutaraldehyde-linked PHM-ovalbumin (molar ratio 4:1) coated at 1 µg/mL the dilution is 1/30,000. ABS 020-03 was used in IHC on a human appendix section.
<b>NCBI Gene ID</b>	7432

---

## Product Images



Immunohistochemistry detection of Peptide Histidine Methionine in human appendix tissue using Anti-Peptide Histidine Methionine Antibody (Cat.ABS 020-03-010). Tissue was mounted and paraffin fixed. Heat induced antigen retrieval was performed using citrate buffer, heated, and then blocked. After washing, the primary antibody (Cat.ABS 020-03-010) was incubated with the sample at a dilution of 1:200. Plasma of the veins stained strongly as well as ganglion cells of neuronal plexuses and neuronal axons.

---

Product Page URL: [www.antibodiesinc.com/products/anti-peptide-histidine-methionine-antibody-3-abs-020-03](http://www.antibodiesinc.com/products/anti-peptide-histidine-methionine-antibody-3-abs-020-03)



Created on 03. June 2026 | All information without guarantee