

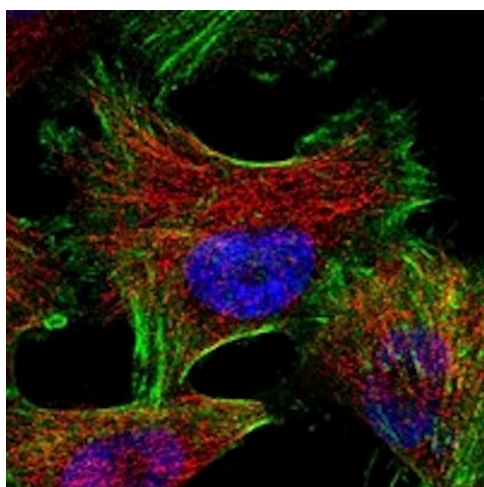
Anti-Gelsolin Antibody

Product Details

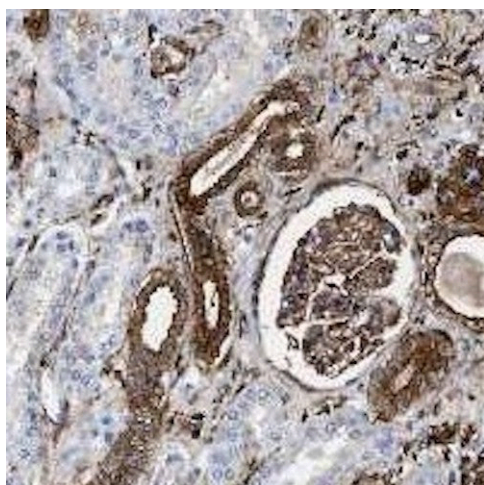
Available Variants	100 uL (SKU:ABS 017-20-010) 400 uL (SKU:ABS 017-20-04) 1000 uL (SKU:ABS 017-20-1)
Conjugate	Unconjugated
Isotype	IgG1/k
Clone	20
Gene Name	GSN
Host Species	Mouse
Concentration	1 mg/mL \pm 15%
Format	Protein A or Protein G purified
Physical State	Liquid
Buffer	0.01 M phosphate buffer, pH 7.4, with 0.5 M NaCl and 15 mM sodium azide
Production Notes	BSA free
Applications	ELISA, IF, IHC, WB
Dilution Ranges	IHC: 1:6000 ICC: 1:2000
Species Reactivity	Human
Immunogen	Gelsolin purified from human plasma
Specificity	ABS 017-20 binds human gelsolin.
Molecular Weight	83 kDa
Storage	2-8°C without exposure to light
UniProt ID	P06396
Country of Origin	United States

Shipping	Shipped on ice packs
Expiration	24 months from date of receipt
Usage Statement	These antibodies are to be used as research laboratory reagents and are not for use as diagnostic or therapeutic reagents in humans.
Application Details	ABS 017-20 does not work as a capture antibody in sandwich ELISA.
NCBI Gene ID	2934

Product Images



Immunofluorescent staining of Gelsolin in human cell line U-251 MG using Anti-Gelsolin Antibody (Cat.ABS 017-20-010). Cells were fixed with formaldehyde and permeabilized prior to staining. Primary antibody (ABS 017-20-010) was incubated with the cells at a dilution of 1:2000.



Immunohistochemistry detection of Gelsolin in human kidney tissue using Anti-Gelsolin Antibody (Cat.ABS 017-20-010). Tissue was mounted and paraffin fixed. Heat induced antigen retrieval was performed using citrate buffer, heated, and then blocked. After washing, the primary antibody (Cat.ABS 017-20-010) was incubated with the sample at a dilution of 1:6000. Staining shows cytoplasmic and membranous positivity in both renal tubules and glomeruli.



Created on 03. June 2026 | All information without guarantee