

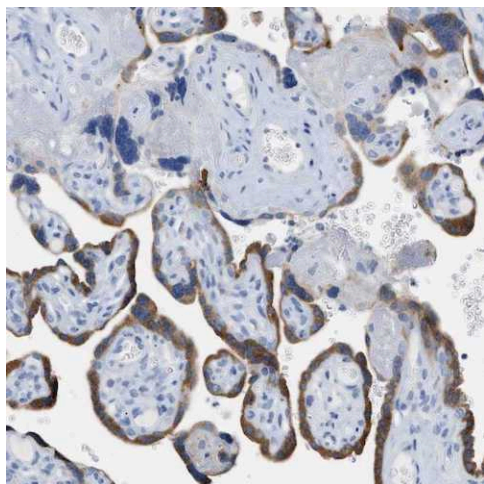
Anti-Pregnancy Associated Plasma Protein A (PAPP-A) Antibody

Product Details

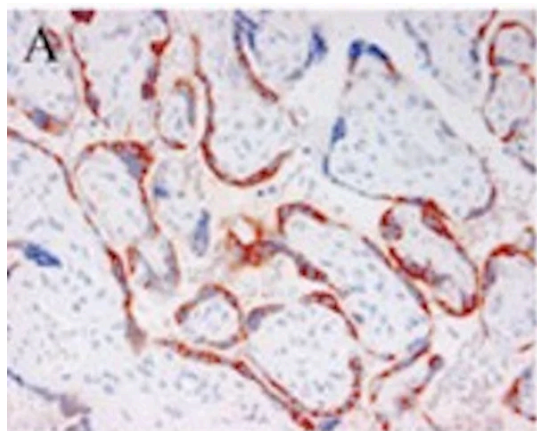
Available Variants	100 uL (SKU:ABS 006-01-010) 400 uL (SKU:ABS 006-01-04) 1000 uL (SKU:ABS 006-01-1)
Conjugate	Unconjugated
Isotype	IgG1/k
Clone	PAPP A 1-1
Gene Name	PAPPA
Host Species	Mouse
Concentration	1 mg/mL \pm 15%
Format	Protein A or Protein G purified
Physical State	Liquid
Buffer	0.01 M phosphate buffer, pH 7.4, with 0.5 M NaCl and 15 mM sodium azide
Production Notes	BSA free
Applications	ELISA, IHC, WB
Species Reactivity	Human
Immunogen	Purified human PAPP-A
Specificity	ABS 006-01 is specific for native human PAPP-A. The epitope of ABS 006-01 is different from BTE 004-09 and ABS 006-24. The epitope is located on the PAPP-A subunit of the heterotetramer.
Molecular Weight	500 kDa (tetramer), 180 kDa (monomer)
Storage	2-8°C without exposure to light
UniProt ID	Q13219

Country of Origin	United States
Shipping	Shipped on ice packs
Expiration	24 months from date of receipt
Usage Statement	These antibodies are to be used as research laboratory reagents and are not for use as diagnostic or therapeutic reagents in humans.
Application Details	In sandwich ELISA with a polyclonal antibody in coat, ABS 006-01 only reacts poorly with PAPP-A in third trimester serum. ABS 006-01 only detects unreduced PAPP-A in Western blotting.
NCBI Gene ID	5069

Product Images



Anti-Pregnancy Associated Plasma Protein A (PAPP-A) Antibody



Anti-Pregnancy Associated Plasma Protein A (PAPP-A) Antibody



Created on 03. June 2026 | All information without guarantee