

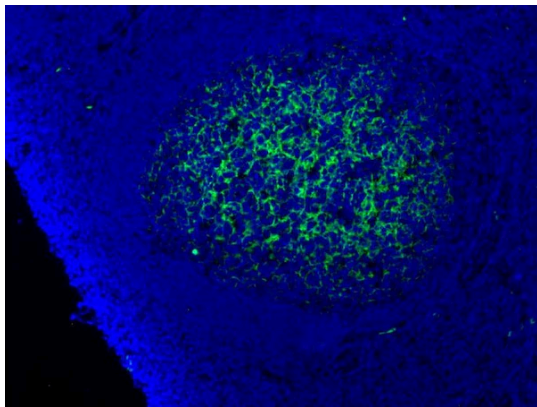
Anti-Complement C9 Antibody

Product Details

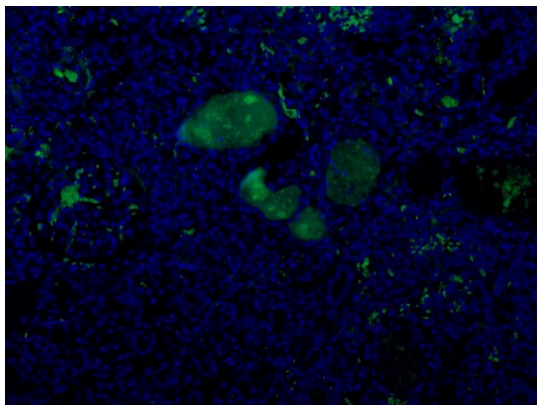
Available Variants	100 uL (SKU:ABS 004-22-010) 400 uL (SKU:ABS 004-22-04) 1000 uL (SKU:ABS 004-22-1)
Conjugate	Unconjugated
Isotype	IgG1/k
Clone	22
Gene Name	C9
Host Species	Mouse
Concentration	1 mg/mL \pm 15%
Format	Protein A or Protein G purified
Physical State	Liquid
Buffer	0.01 M phosphate buffer, pH 7.4, with 0.5 M NaCl and 15 mM sodium azide
Production Notes	BSA free
Applications	ELISA, IF, IHC, WB
Dilution Ranges	IHC: 1:100 ELISA: 1:50
Species Reactivity	Human
Immunogen	Complement factor C9
Specificity	ABS 004-22 is specific for complement factor C9.
Molecular Weight	71 kDa
Storage	2-8°C without exposure to light
UniProt ID	P02748
Country of Origin	United States

Shipping	Shipped on ice packs
Expiration	24 months from date of receipt
Usage Statement	These antibodies are to be used as research laboratory reagents and are not for use as diagnostic or therapeutic reagents in humans.
Application Details	ABS 004-22 recognizes C9 in human serum diluted 1/50 in Tris buffer (20 mM Tris-base, 1 mM MgCl ₂ , 1 mM CaCl ₂ and 140 mM NaCl) and incubated for 2 hours at 37°C using a human IgM coated (10 µg/mL overnight at 4°C, blocked with PBS 7.2 + 1% BSA for 1 hour) ELISA plate. ABS 004-22 was used in IHC in formaline fixed paraffin embedded tissue with a dilution of 1:100. ABS 004-22 was used in IF with a dilution of 1:75.
NCBI Gene ID	735

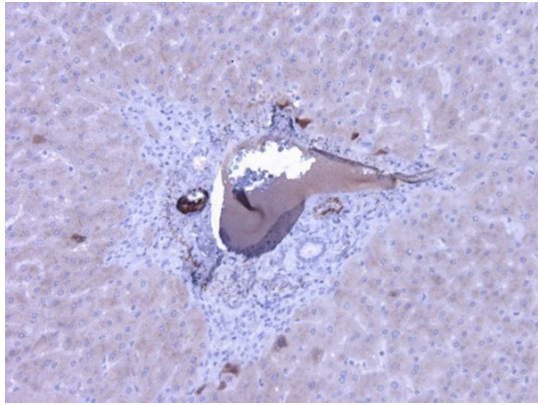
Product Images



Immunofluorescent staining of Complement C9 in Follicular dendritic cell network in germinal centers of human tonsil tissue using Anti-Complement C9 Antibody (Cat.ABS 004-22-010). Cells were fixed with formaldehyde and permeabilized prior to staining. Primary antibody (ABS 004-22-010) was incubated with the cells at a dilution of 1:75.



Immunofluorescent staining of Complement C9 in human kidney plasma of veins using Anti-Complement C9 Antibody (Cat.ABS 004-22-010). Cells were fixed with formaldehyde and permeabilized prior to staining. Primary antibody (ABS 004-22-010) was incubated with the cells at a dilution of 1:75.



Immunohistochemistry detection of Complement C9 in human liver tissue using Anti-Complement C9 Antibody (Cat.ABS 004-22-010). Tissue was mounted and paraffin fixed. Heat induced antigen retrieval was performed using citrate buffer, heated, and then blocked. After washing, the primary antibody (Cat.ABS 004-22-010) was incubated with the sample at a dilution of 1:100. Plasma of portal veins are strongly stained.

Product Page URL: www.antibodiesinc.com/products/anti-complement-c9-antibody-22-abs-004-22



Created on 03. June 2026 | All information without guarantee