

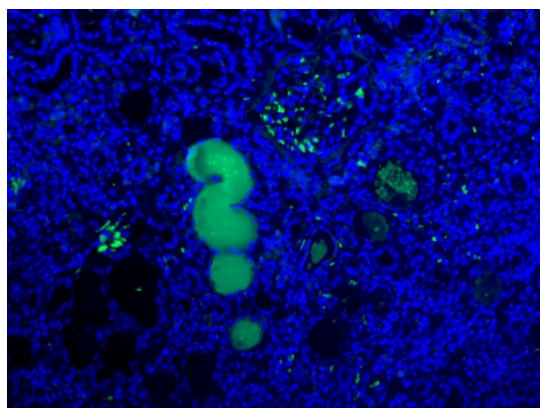
Anti-Pro/Activated Complement C1s Antibody

Product Details

Available Variants	100 uL (SKU:ABS 002-49-010) 400 uL (SKU:ABS 002-49-04) 1000 uL (SKU:ABS 002-49-1)
Conjugate	Unconjugated
Isotype	IgG1/k
Clone	49
Gene Name	C1S
Host Species	Mouse
Concentration	1 mg/mL \pm 15%
Format	Protein A or Protein G purified
Physical State	Liquid
Buffer	0.01 M phosphate buffer, pH 7.4, with 0.5 M NaCl and 15 mM sodium azide
Production Notes	BSA free
Applications	ELISA, IF
Dilution Ranges	IHC: 1:10
Species Reactivity	Human
Immunogen	Human plasma C1s Proenzyme
Specificity	ABS 002-49 is specific for C1s proenzyme and activated free C1s and C1s in complex with C1 inhibitor. Epitope differs from that of ABS 002-09.
Molecular Weight	Pro-enzyme C1s (pro-C1s) appears as a single-chain polypeptide around 80 kDa. Upon activation, it is cleaved into two disulfide-linked chains: a ~57 kDa A-chain and and 27 kDa B-chain).
Storage	2-8°C without exposure to light
UniProt ID	P09871

Country of Origin	United States
Shipping	Shipped on ice packs
Expiration	24 months from date of receipt
Usage Statement	These antibodies are to be used as research laboratory reagents and are not for use as diagnostic or therapeutic reagents in humans.
Application Details	ABS 002-49 reacts in ELISA when tested with activated C1s enzyme directly coated onto the microtiter well or in sandwich ELISA in combination with a polyclonal antibody in coat.
NCBI Gene ID	716

Product Images



Immunofluorescent staining of Pro/Activated Complement C1s in veins of human kidney with nephritis using Anti-Pro/Activated Complement C1s Antibody (Cat.ABS 002-49-010). Cells were fixed with formaldehyde and permeabilized prior to staining. Primary antibody (ABS 002-49-010) was incubated with the cells at a dilution of 1:10.

Product Page URL: www.antibodiesinc.com/products/anti-pro-activated-complement-c1s-antibody-49-abs-002-49



Created on 03. June 2026 | All information without guarantee