

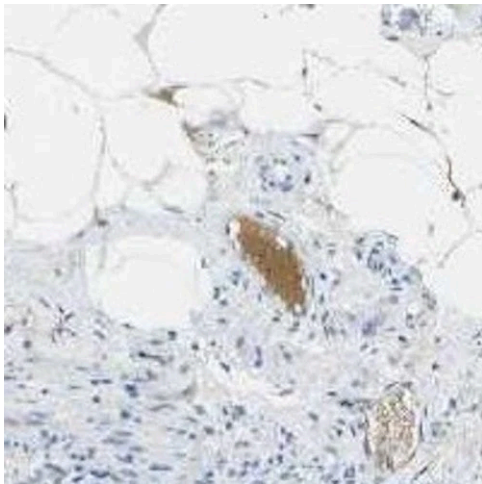
Anti-Pro/Activated Complement C1s Antibody

Product Details

Available Variants	100 uL (SKU:ABS 002-09-010) 400 uL (SKU:ABS 002-09-04) 1000 uL (SKU:ABS 002-09-1)
Conjugate	Unconjugated
Isotype	IgG1/k
Clone	9
Gene Name	C1S
Host Species	Mouse
Concentration	1 mg/mL \pm 15%
Format	Protein A or Protein G purified
Physical State	Liquid
Buffer	0.01 M phosphate buffer, pH 7.4, with 0.5 M NaCl and 15 mM sodium azide
Production Notes	BSA free
Applications	ELISA, IHC
Species Reactivity	Human
Immunogen	C1s proenzyme purified from human plasma
Specificity	ABS 002-09 is specific for C1s proenzyme and activated free C1s. Epitope differs from that of ABS 002-49.
Molecular Weight	Pro-enzyme C1s (pro-C1s) appears as a single-chain polypeptide around 80 kDa. Upon activation, it is cleaved into two disulfide-linked chains: a ~57 kDa A-chain and and 27 kDa B-chain).
Storage	2-8°C without exposure to light
UniProt ID	P09871
Country of Origin	United States

Shipping	Shipped on ice packs
Expiration	24 months from date of receipt
Usage Statement	These antibodies are to be used as research laboratory reagents and are not for use as diagnostic or therapeutic reagents in humans.
Application Details	ABS 002-09 reacts in ELISA when tested with activated C1s enzyme directly coated onto the microtiter well or in sandwich ELISA in combination with a polyclonal antibody in coat.
NCBI Gene ID	716

Product Images



Immunohistochemistry detection of Pro/Activated Complement C1s in human rectum tissue using Anti-Pro/Activated Complement C1s Antibody (Cat.ABS 002-09-010). Tissue was mounted and paraffin fixed. Heat induced antigen retrieval was performed using citrate buffer, heated, and then blocked. After washing, the primary antibody (Cat.ABS 002-09-010) was incubated with the sample. Staining in the plasma shows distinct positivity.

Product Page URL: www.antibodiesinc.com/products/anti-pro-activated-complement-c1s-antibody-9-abs-002-09



Created on 03. June 2026 | All information without guarantee