

## Anti-APC-AAT Complexes, Neoepitope Antibody

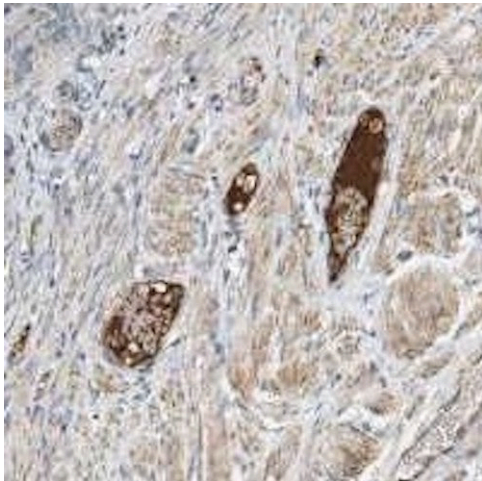
### Product Details

<b>Available Variants</b>	100 uL (SKU:ABS 001-07-010) 400 uL (SKU:ABS 001-07-04) 1000 uL (SKU:ABS 001-07-1)
<b>Conjugate</b>	Unconjugated
<b>Isotype</b>	IgG1/k
<b>Clone</b>	APC-7
<b>Gene Name</b>	PROC
<b>Host Species</b>	Mouse
<b>Concentration</b>	1 mg/mL $\pm$ 15%
<b>Format</b>	Protein A or Protein G purified
<b>Physical State</b>	Liquid
<b>Buffer</b>	0.01 M phosphate buffer, pH 7.4, with 0.5 M NaCl and 15 mM sodium azide
<b>Production Notes</b>	BSA free
<b>Applications</b>	ELISA
<b>Species Reactivity</b>	Human
<b>Immunogen</b>	Recombinant human activated protein C
<b>Specificity</b>	ABS 001-07 is specific for a conformation-dependent neoepitope that is expressed in activated protein C upon complex-formation with $\alpha$ 1-antitrypsin. No reaction is seen to non-complexed $\alpha$ 1-antitrypsin and only very little cross reaction to protein C zymogen. Note that specificity is calcium dependent.
<b>Molecular Weight</b>	62 kDa proenzyme, 55 kDa active enzyme
<b>Storage</b>	2-8°C without exposure to light
<b>UniProt ID</b>	<a href="#">P04070</a>
<b>Country of Origin</b>	United States

<b>Shipping</b>	Shipped on ice packs
<b>Expiration</b>	24 months from date of receipt
<b>Usage Statement</b>	These antibodies are to be used as research laboratory reagents and are not for use as diagnostic or therapeutic reagents in humans.
<b>Application Details</b>	ABS 001-07 reacts strongly with APC-AAT complexes in ELISA. It can be used in sandwich ELISA in combination with a polyclonal anti-protein C antiserum. Note, that the conformational neoepitope expressed in the APC-AAT complex can also be expressed in APC coated directly onto a high-binding microtiter plate.
<b>NCBI Gene ID</b>	5624

---

## Product Images



Immunohistochemistry detection of APC-AAT complexes, neoepitope in human fallopian tube tissue using Anti-APC-AAT Complexes, Neoepitope Antibody (Cat.ABS 001-07-010). Tissue was mounted and paraffin fixed. Heat induced antigen retrieval was performed using citrate buffer, heated, and then blocked. After washing, the primary antibody (Cat.ABS 001-07-010) was incubated with the sample.

---

**Product Page URL:** [www.antibodiesinc.com/products/anti-apc-aat-complexes-neoepitope-antibody-apc-7-abs-001-07](http://www.antibodiesinc.com/products/anti-apc-aat-complexes-neoepitope-antibody-apc-7-abs-001-07)



Created on 03. June 2026 | All information without guarantee