

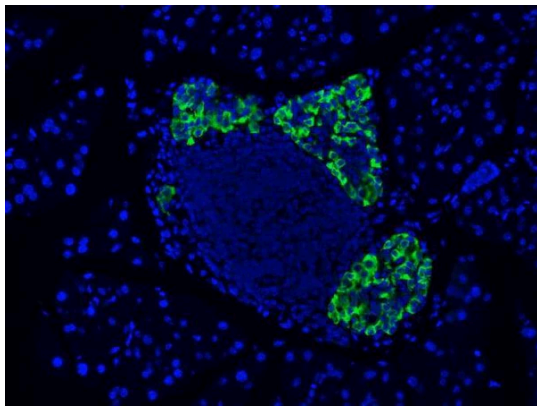
Anti-GLP-1 (7-37) and GLP-1 (7-36) amide (N-term) Antibody

Product Details

Available Variants	100 uL (SKU:ABS 033-04-010) 400 uL (SKU:ABS 033-04-04) 1000 uL (SKU:ABS 033-04-1)
Conjugate	Unconjugated
Isotype	IgG1/k
Clone	4
Gene Name	GCG
Host Species	Mouse
Concentration	1 mg/mL \pm 15%
Format	Protein A or Protein G purified
Physical State	Liquid
Buffer	0.01 M phosphate buffer, pH 7.4, with 0.5 M NaCl and 15 mM sodium azide
Production Notes	BSA free
Applications	ELISA, IHC
Species Reactivity	Human
Immunogen	Synthetic GLP-1(7-17)
Specificity	ABS 033-04 binds the free N-terminus of GLP-1(7-37) and GLP-1(7-36)amide and shows <0.2% cross-reactivity with GLP-1(1-37), GLP-1(9-36)amide, glucagon, human GIP and exendin-4. Cross-reacts approximately 1% with human GLP-2.
Molecular Weight	20 kDa (proglucagon)
Storage	2-8°C without exposure to light
UniProt ID	P01275

Country of Origin	United States
Shipping	Shipped on ice packs
Expiration	24 months from date of receipt
Usage Statement	These antibodies are to be used as research laboratory reagents and are not for use as diagnostic or therapeutic reagents in humans.
Application Details	ABS 033-04 binds free GLP-1(7-37) and free GLP-1(7-36) amide. Not recommended for use in sandwich ELISA. (1)
NCBI Gene ID	2641

Product Images



Immunohistochemistry detection of GLP-1(7-37) and GLP-1(7-36) amide (N-term) in Mouse endocrine tissue using Anti-GLP-1 (7-37) and GLP-1 (7-36) amide (N-term) Antibody (Cat.ABS 033-04-010). Tissue was mounted and paraffin fixed. Heat induced antigen retrieval was performed using citrate buffer, heated, and then blocked. After washing, the primary antibody (Cat.ABS 033-04-010) was incubated with the sample at a dilution of 1:500. Courtesy of Dr. Annette Plesner, University of British Columbia.

Product Page URL: www.antibodiesinc.com/products/anti-glp-1-7-37-and-glp-1-7-36-amide-n-term-antibody-4-abs-033-04



Created on 03. June 2026 | All information without guarantee