

Anti-ChAT (Choline Acetyltransferase) Antibody



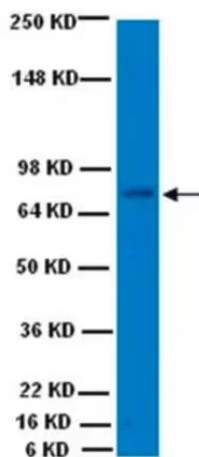
Product Details

Available Variants	100 µL (SKU:315-ChAT) 25 µL (SKU:315-ChATt)
Conjugate	Unconjugated
Isotype	IgG
Gene Name	CHAT
Host Species	Goat
Format	Affinity Purified
Physical State	Liquid
Buffer	PBS + 5 mg/ml BSA + 0.2% NaN ₃
Production Notes	Prepared from goat serum by affinity purification using a column to which the protein immunogen was coupled.
Applications	IHC, WB
Dilution Ranges	WB: 1:100 WB Brain: 1:100 IHC: 1:100-1:1000
Species Reactivity	Chicken, Guinea Pig, Human, Mouse, Non-Human Primate, Rat
Immunogen	Recombinant human choline acetyltransferase
Specificity	Specific for endogenous levels of the ~70 kDa choline acetyltransferase protein.
Molecular Weight	70 kDa
Quality Control	Western blots performed on each lot.
Storage	Recommended that the undiluted antibody be aliquoted into smaller working volumes (10-30 uL/vial depending on usage) upon arrival and stored long term

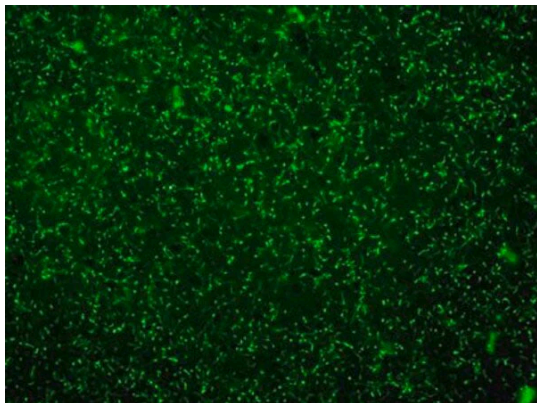
at -20° C or -80° C, while keeping a working aliquot stored at 4° C for short term. Avoid freeze/thaw cycles. Stable for at least 1 year.

Antibody Registry ID	AB_2492055
UniProt ID	P28329 .
Country of Origin	United States
Shipping	Blue Ice
Expiration	After date of receipt, stable for at least 1 year at -20°C.
Usage Statement	For research use only. Not intended for therapeutic or diagnostic use. Use of all products is subject to our terms and conditions, which can be viewed on our website.
NCBI Gene ID	1103

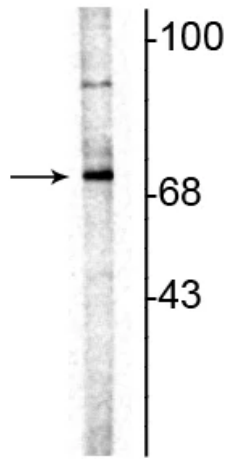
Product Images



Western blot detection of ChAT using Anti-Choline Acetyltransferase (ChAT) Antibody (Cat.315-CHAT). Gel was loaded with Mouse brain lysate. Proteins were transferred to the PVDF membrane, blocked, and then washed with a buffer. Primary antibody was incubated with sample at 1:1000 and then detected via chemiluminescence using rabbit anti-goat secondary antibody conjugated to HRP. Arrow indicates protein ChAT (~68-70 kDa).



Immunohistochemistry detection of ChAT in Coronal section of rat neocortex tissue using Anti-Choline Acetyltransferase (ChAT) Antibody (Cat.315-CHAT). Tissue was mounted and paraffin fixed. Heat induced antigen retrieval was performed using citrate buffer, heated, and then blocked. After washing, the primary antibody (Cat.315-CHAT) was incubated with the sample. 315-CHAT showing the choline acetyltransferase positive cholinergic nerve fibers and terminals. Reference: D. Anandh, K Shobha and Dr. Bindu M Kutty, Department of Neurophysiology, National Institute of Mental Health and Neurosciences, Bangalore, India.



Western blot of rat hippocampal lysate showing specific immunolabeling of the ~70 kDa ChAT.

Product Page URL: www.antibodiesinc.com/products/anti-chat-choline-acetyltransferase-antibody-315-chat



Created on 23. June 2026 | All information without guarantee