

Anti-TrpC5 Antibody

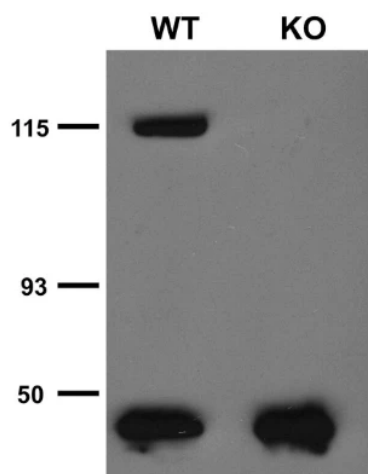


Product Details

| | |
|---------------------------|--|
| Available Variants | 100 µL (SKU:75-104) |
| Conjugate | Unconjugated |
| Isotype | IgG2b |
| Clone | N67/15 |
| Gene Name | TRPC5 TRP5 |
| Host Species | Mouse |
| Concentration | 1 mg/mL |
| Format | Purified by Protein A chromatography |
| Physical State | Liquid |
| Buffer | 10 mM Tris, 50 mM Sodium Chloride, 0.065% Sodium Azide pH 7.32 |
| Production Notes | Produced by in vitro bioreactor culture of hybridoma line followed by Protein A affinity chromatography. Purified mAbs are >90% specific antibody. |
| Applications | ELISA, ICC, IHC, IP, WB |
| Dilution Ranges | WB: 1:1000 IHC: 1:500 ICC: 1:500 |
| Species Reactivity | Guinea Pig, Human, Mouse, Rat |
| Immunogen | Synthetic peptide amino acids 827-845 (SKAESSKRSFMGPSLKKL) of human TrpC5 (accession number Q9UL62) |
| Specificity | No cross-reactivity reported |
| Molecular Weight | 110 kDa |

| | |
|-----------------------------|---|
| Quality Control | Each new lot of antibody is quality control tested on cells overexpressing target protein and confirmed to give the expected staining pattern. |
| Storage | Aliquot and store at $\leq -20^{\circ}\text{C}$ for long term storage. For short term storage, store at $2-8^{\circ}\text{C}$. For maximum recovery of product, centrifuge the vial prior to removing the cap. |
| Antibody Registry ID | AB_2240979 |
| UniProt ID | Q9UL62 |
| Country of Origin | United States |
| Shipping | Shipped on ice packs |
| Expiration | 24 months from date of receipt |
| Usage Statement | These antibodies are to be used as research laboratory reagents and are not for use as diagnostic or therapeutic reagents in humans. |

Product Images

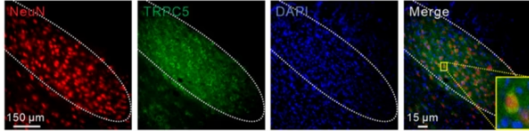


Immunoprecipitation analysis of TRPC5 protein in brain microsomes extracted from wild-type (WT) and TRPC5 knockout (KO) littermates. Courtesy of Dr. David Clapham (HHMI/Harvard Medical School).



Adult rat hippocampal immunohistochemistry.

b) TRPC5



Immunostaining of NeuN (red), TRPC5 (green), DAPI (blue) and merged image in STN. Inset, enlarged merged image of a neuron. Image from publication CC-BY-4.0.

[PMID:36323817](https://pubmed.ncbi.nlm.nih.gov/36323817/)

Product Page URL: www.antibodiesinc.com/products/anti-trpc5-antibody-n67-15-75-104



Created on 10. July 2026 | All information without guarantee