

Anti-Kir6.1 Potassium Channel Antibody

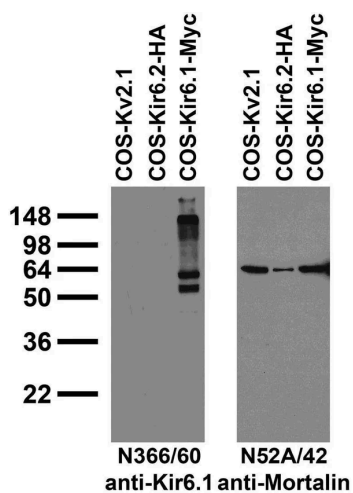


Product Details

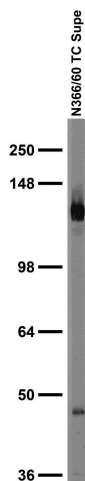
Available Variants	100 µL (SKU:75-394)
Conjugate	Unconjugated
Isotype	IgG2a
Clone	N366/60
Gene Name	Kcnj8
Host Species	Mouse
Concentration	1 mg/mL
Format	Purified by Protein A chromatography
Physical State	Liquid
Buffer	10 mM Tris, 50 mM Sodium Chloride, 0.065% Sodium Azide pH 7.125
Production Notes	Produced by in vitro bioreactor culture of hybridoma line followed by Protein A affinity chromatography. Purified mAbs are >90% specific antibody.
Applications	ELISA, ICC, IHC, WB
Species Reactivity	Mouse, Rat
Immunogen	Fusion protein amino acids 306-424 (cytoplasmic C-terminus) of rat Kir6.1 (accession number Q63664) produced recombinantly in E. Coli
Specificity	Does not cross-react with Kir6.2
Molecular Weight	45 kDa
Quality Control	Each new lot of antibody is quality control tested by western blot on rat whole brain lysate and confirmed to stain the expected molecular weight band.

Storage	Aliquot and store at $\leq -20^{\circ}\text{C}$ for long term storage. For short term storage, store at $2-8^{\circ}\text{C}$. For maximum recovery of product, centrifuge the vial prior to removing the cap.
Antibody Registry ID	AB_2491087
UniProt ID	Q63664
Country of Origin	United States
Shipping	Shipped on ice packs
Expiration	24 months from date of receipt
Usage Statement	These antibodies are to be used as research laboratory reagents and are not for use as diagnostic or therapeutic reagents in humans.

Product Images



Immunoblot against extracts of COS cells transiently transfected with Myc-tagged Kir6.1, HA-tagged Kir6.2 or untagged Kv2.1 plasmid probed with N366/60 (left) or N52A/42 (right) TC supe.



Adult rat brain membrane immunoblot.

Product Page URL: www.antibodiesinc.com/products/anti-kir6-1-potassium-channel-antibody-n366-60-75-394



Created on 11. July 2026 | All information without guarantee