

Anti-ATF4 Antibody



Product Details

Available Variants	100 µL (SKU:75-345)
Conjugate	Unconjugated
Isotype	IgG2a
Clone	N360A/24
Gene Name	ATF4 CREB2 TXREB
Host Species	Mouse
Concentration	1 mg/mL
Format	Purified by Protein A chromatography
Physical State	Liquid
Buffer	10 mM Tris, 50 mM Sodium Chloride, 0.065% Sodium Azide pH 7.125
Production Notes	Produced by in vitro bioreactor culture of hybridoma line followed by Protein A affinity chromatography. Purified mAbs are >90% specific antibody.
Applications	ELISA, ICC, IHC, WB
Species Reactivity	Human, Mouse, Rat
Immunogen	Fusion protein amino acids 25-327 (nearly full-length, all but first 24 amino acids) of human ATF4 (accession number P18848) produced recombinantly in E. Coli
Specificity	Does not cross-react with ATF5
Molecular Weight	60 kDa
Quality Control	Each new lot of antibody is quality control tested by western blot on rat whole brain lysate and confirmed to stain the expected molecular weight band.
Storage	Aliquot and store at $\leq -20^{\circ}\text{C}$ for long term storage. For short term storage, store at $2-8^{\circ}\text{C}$. For maximum recovery of product, centrifuge the vial prior to

removing the cap.

Antibody Registry ID AB_2315807

UniProt ID [P18848](#)

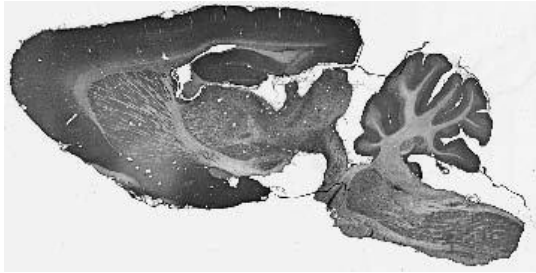
Country of Origin United States

Shipping Shipped on ice packs

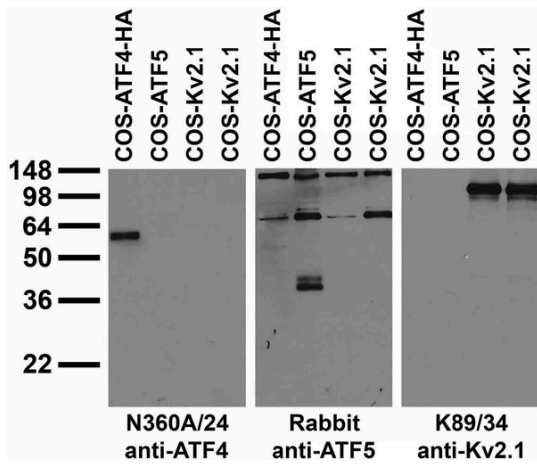
Expiration 24 months from date of receipt

Usage Statement These antibodies are to be used as research laboratory reagents and are not for use as diagnostic or therapeutic reagents in humans.

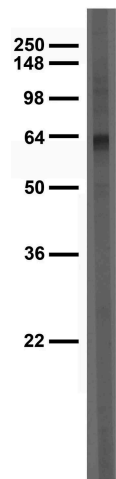
Product Images



Adult rat brain immunohistochemistry.



Transfected cell immunoblot: extracts of COS cells transiently transfected with HA-tagged ATF4 or untagged ATF5 or Kv2.1 plasmid and probed with N360A/24 TC supe (left), Rabbit anti-ATF5 (middle) or K89/34 TC supe (right).



Adult rat brain low-speed pellet immunoblot.

Product Page URL: www.antibodiesinc.com/products/anti-atf4-antibody-n360a-24-75-345



Created on 11. July 2026 | All information without guarantee