

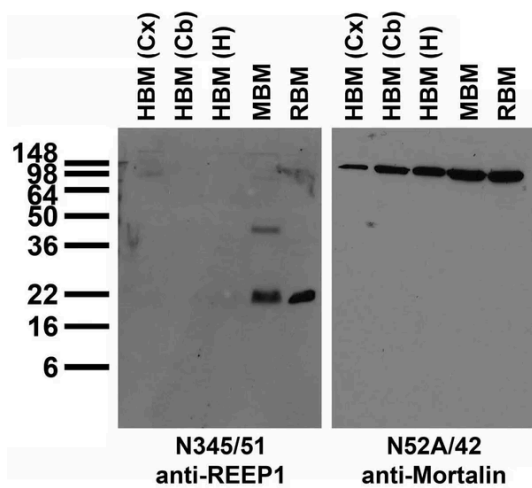
## Anti-REEP1 Antibody



### Product Details

<b>Available Variants</b>	100 µL (SKU:75-313)
<b>Conjugate</b>	Unconjugated
<b>Isotype</b>	IgG2b
<b>Clone</b>	N345/51
<b>Gene Name</b>	Reep1 D6ErtD253e C2orf23 SPG31
<b>Host Species</b>	Mouse
<b>Concentration</b>	1 mg/mL
<b>Format</b>	Purified by Protein A chromatography
<b>Physical State</b>	Liquid
<b>Buffer</b>	10 mM Tris, 50 mM Sodium Chloride, 0.065% Sodium Azide pH 7.125
<b>Production Notes</b>	Produced by in vitro bioreactor culture of hybridoma line followed by Protein A affinity chromatography. Purified mAbs are >90% specific antibody.
<b>Applications</b>	ELISA, ICC, IHC, WB
<b>Species Reactivity</b>	Mouse, Rat
<b>Immunogen</b>	Fusion protein amino acids 111-201 (KDRSYDALVHFGKRGLNVAATAAVMAASKGQGALSERLRSFSMQDLTTIRGD GAPAPSGPPPPGTGRSSGKHSQPKMSRSASESAGSSGTA, cytoplasmic C- terminus) of mouse REEP1 (accession number Q8BGH4) produced recombinantly in E. Coli
<b>Specificity</b>	Does not cross-react with REEP2
<b>Molecular Weight</b>	22 kDa
<b>Quality Control</b>	Each new lot of antibody is quality control tested by western blot on rat whole brain lysate and confirmed to stain the expected molecular weight band.





Immunoblot against crude membranes from whole mouse (MBM) or rat (RBM) brain and from human hippocampus [HBM(H)], cerebellum [HBM(Cb)] or cerebral cortex [HBM(Cx)] and probed with N345/51 (left) or N52A/42 (right) TC supe.

Product Page URL: [www.antibodiesinc.com/products/anti-reep1-antibody-n345-51-75-313](http://www.antibodiesinc.com/products/anti-reep1-antibody-n345-51-75-313)



Created on 09. July 2026 | All information without guarantee