

Anti-QKI-7 Antibody

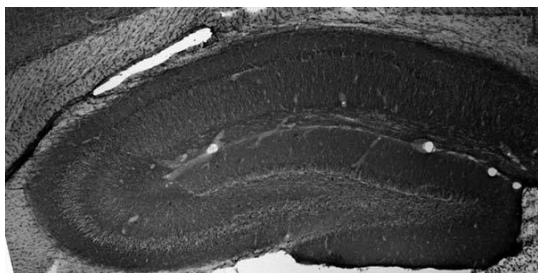


Product Details

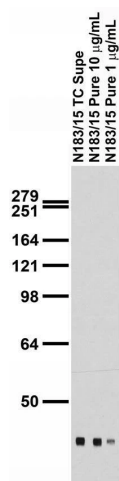
Available Variants	100 µL (SKU:75-200)
Conjugate	Unconjugated
Isotype	IgG1
Clone	N183/15
Gene Name	Qki Qk QKI HKQ Qk1 Qka1
Host Species	Mouse
Concentration	1 mg/mL
Format	Purified by Protein A chromatography
Physical State	Liquid
Buffer	10 mM Tris, 50 mM Sodium Chloride, 0.065% Sodium Azide pH 7.125
Production Notes	Produced by in vitro bioreactor culture of hybridoma line followed by Protein A affinity chromatography. Purified mAbs are >90% specific antibody.
Applications	ELISA, ICC, IHC, WB
Dilution Ranges	WB: 1:1000 IHC: 1:200 ICC: 1:200
Species Reactivity	Human, Mouse, Rat
Immunogen	Synthetic peptide amino acids 303-317 (LEWIEMPVMPDISAH, C-terminal tail) of human QKI-7 (accession number Q96PU8-5)
Specificity	Does not cross-react with QKI-5, QKI-6 or QKI-7b
Molecular Weight	36-38 kDa

Quality Control	Each new lot of antibody is quality control tested by western blot on rat whole brain lysate and confirmed to stain the expected molecular weight band.
Storage	Aliquot and store at $\leq -20^{\circ}\text{C}$ for long term storage. For short term storage, store at $2-8^{\circ}\text{C}$. For maximum recovery of product, centrifuge the vial prior to removing the cap.
Antibody Registry ID	AB_2173148
UniProt ID	Q96PU8-5
Country of Origin	United States
Shipping	Shipped on ice packs
Expiration	24 months from date of receipt
Usage Statement	These antibodies are to be used as research laboratory reagents and are not for use as diagnostic or therapeutic reagents in humans.

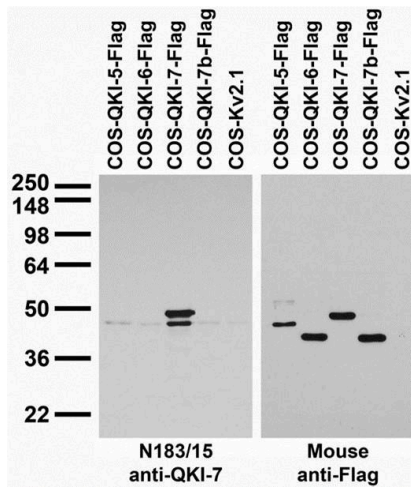
Product Images



Adult rat hippocampus immunohistochemistry.



Adult rat brain membrane immunoblot.



Transfected cell immunoblot: extracts of COS cells transiently transfected with Flag-tagged QKI-5, QKI-6, QKI-7 and QKI-7b and untagged Kv2.1 plasmids and probed with N183/15 (left) and mouse anti-Flag (right).

Product Page URL: www.antibodiesinc.com/products/anti-qki-7-antibody-n183-15-75-200



Created on 11. July 2026 | All information without guarantee