

Anti-OCRL/INPP5b Antibody

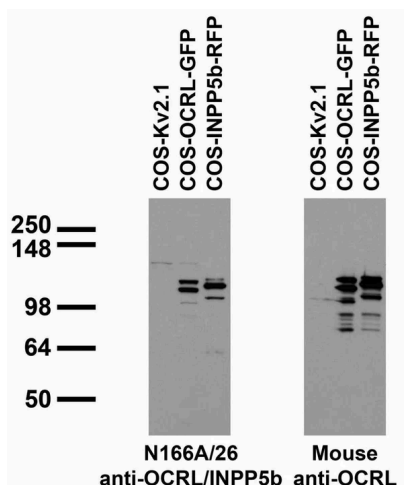


Product Details

Available Variants	100 µL (SKU:75-215)
Conjugate	Unconjugated
Isotype	IgG1
Clone	N166A/26
Gene Name	INPP5B OCRL2
Host Species	Mouse
Concentration	1 mg/mL
Format	Purified by Protein A chromatography
Physical State	Liquid
Buffer	10 mM Tris, 50 mM Sodium Chloride, 0.065% Sodium Azide pH 7.125
Production Notes	Produced by in vitro bioreactor culture of hybridoma line followed by Protein A affinity chromatography. Purified mAbs are >90% specific antibody.
Applications	ELISA, ICC, WB
Species Reactivity	Human, Mouse, Rat
Immunogen	Fusion protein amino acids 1-901 (full-length) of human OCRL (accession number Q01968) produced recombinantly in E. Coli
Specificity	Cross-reacts with INPP5b
Molecular Weight	100 kDa
Quality Control	Each new lot of antibody is quality control tested on cells overexpressing target protein and confirmed to give the expected staining pattern.

Storage	Aliquot and store at $\leq -20^{\circ}\text{C}$ for long term storage. For short term storage, store at $2-8^{\circ}\text{C}$. For maximum recovery of product, centrifuge the vial prior to removing the cap.
Antibody Registry ID	AB_2156491
UniProt ID	Q01968
Country of Origin	United States
Shipping	Shipped on ice packs
Expiration	24 months from date of receipt
Usage Statement	These antibodies are to be used as research laboratory reagents and are not for use as diagnostic or therapeutic reagents in humans.

Product Images



Transfected cell immunoblot: extracts of COS cells transiently transfected with untagged Kv2.1, GFP-tagged OCRL or RFP-tagged INPP5b plasmids and probed with N166A/26 (left) and another cross-reacting mouse OCRL antibody (right).

Product Page URL: www.antibodiesinc.com/products/anti-ocrl-inpp5b-antibody-n166a-26-75-215



Created on 11. July 2026 | All information without guarantee