

# Anti-Botch Antibody

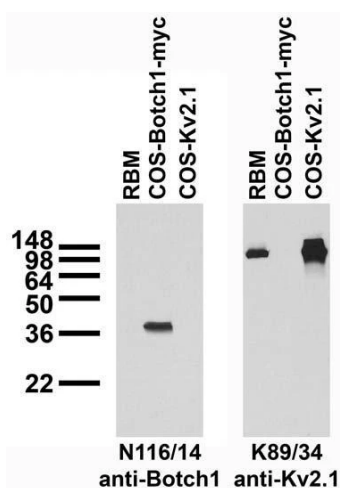


## Product Details

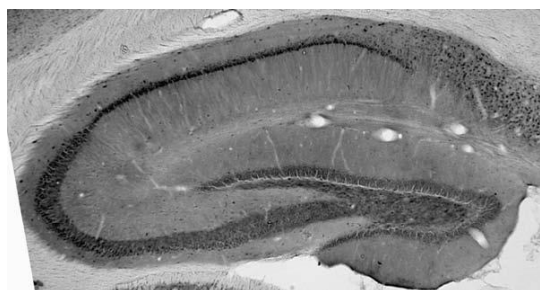
<b>Available Variants</b>	100 µL (SKU:75-181)
<b>Conjugate</b>	Unconjugated
<b>Isotype</b>	IgG1
<b>Clone</b>	N116/14
<b>Gene Name</b>	Chac1 Botch Npg7
<b>Host Species</b>	Mouse
<b>Concentration</b>	1 mg/mL
<b>Format</b>	Purified by Protein A chromatography
<b>Physical State</b>	Liquid
<b>Buffer</b>	10 mM Tris, 50 mM Sodium Chloride, 0.065% Sodium Azide pH 7.109
<b>Production Notes</b>	Produced by in vitro bioreactor culture of hybridoma line followed by Protein A affinity chromatography. Purified mAbs are >90% specific antibody.
<b>Applications</b>	ELISA, ICC, IHC, WB
<b>Dilution Ranges</b>	WB: 1:2000
<b>Species Reactivity</b>	Human, Mouse, Rat
<b>Immunogen</b>	Fusion protein amino acids 1-222 (full-length) of rat Botch1 (accession number B3STU3.1) produced recombinantly in E. Coli
<b>Specificity</b>	No cross-reactivity against Botch2/Chac2
<b>Molecular Weight</b>	25 kDa
<b>Quality Control</b>	Each new lot of antibody is quality control tested on cells overexpressing target protein and confirmed to give the expected staining pattern.

<b>Storage</b>	Aliquot and store at $\leq -20^{\circ}\text{C}$ for long term storage. For short term storage, store at $2-8^{\circ}\text{C}$ . For maximum recovery of product, centrifuge the vial prior to removing the cap.
<b>Antibody Registry ID</b>	AB_2079324
<b>UniProt ID</b>	<u>B3STU3</u>
<b>Country of Origin</b>	United States
<b>Shipping</b>	Shipped on ice packs
<b>Expiration</b>	24 months from date of receipt
<b>Usage Statement</b>	These antibodies are to be used as research laboratory reagents and are not for use as diagnostic or therapeutic reagents in humans.

## Product Images



Adult rat brain membrane (RBM) and transfected cell immunoblot: extracts of RBM and COS cells transiently transfected with Myc- tagged Botch1 and untagged Kv2.1 plasmids and probed with N116/14 (left panel) and K89/34 (right panel) TC supe.



Adult rat hippocampus immunohistochemistry.



Created on 11. July 2026 | All information without guarantee