

Anti-Snapin/SNAPAP Antibody

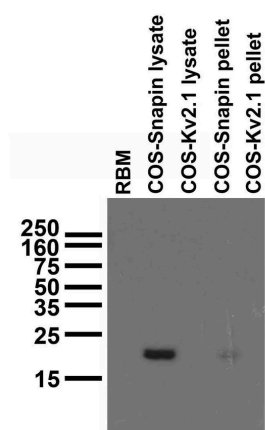


Product Details

Available Variants	100 µL (SKU:75-045)
Conjugate	Unconjugated
Isotype	IgG1
Clone	L8/15
Gene Name	SNAPIN BLOC1S7 SNAP25BP SNAPAP
Host Species	Mouse
Concentration	1 mg/mL
Format	Purified by Protein A chromatography
Physical State	Liquid
Buffer	10 mM Tris, 50 mM Sodium Chloride, 0.065% Sodium Azide pH 7.4
Production Notes	Produced by in vitro bioreactor culture of hybridoma line followed by Protein A affinity chromatography. Purified mAbs are >90% specific antibody.
Applications	ELISA, ICC, IHC, IP, WB
Species Reactivity	Human, Mouse, Rat
Immunogen	Synthetic peptide of amino acids 115-136 of human snapin (KETARRRAMLDSGIYPPGSPGK; accession number Q95295)
Specificity	No cross-reactivity reported
Molecular Weight	20 kDa
Quality Control	Each new lot of antibody is quality control tested by IHC on either rat or mouse brain and confirmed to give the expected staining pattern.

Storage	Aliquot and store at $\leq -20^{\circ}\text{C}$ for long term storage. For short term storage, store at $2-8^{\circ}\text{C}$. For maximum recovery of product, centrifuge the vial prior to removing the cap.
Antibody Registry ID	AB_2255078
UniProt ID	O95295
Country of Origin	United States
Shipping	Shipped on ice packs
Expiration	24 months from date of receipt
Usage Statement	These antibodies are to be used as research laboratory reagents and are not for use as diagnostic or therapeutic reagents in humans.

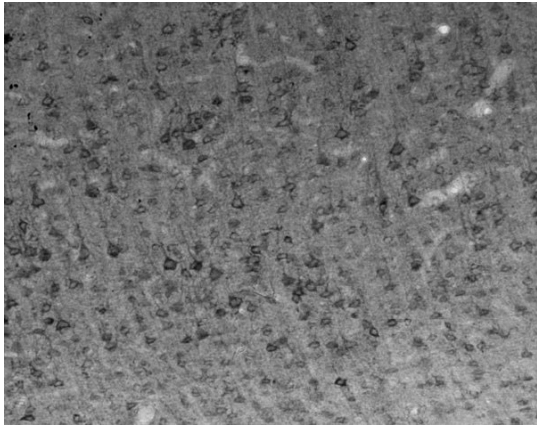
Product Images



Immunoblot on adult rat brain membrane (RBM) and samples from transfected COS cells.



Adult rat hippocampus immunohistochemistry.



Adult rat cortex immunohistochemistry.

Product Page URL: www.antibodiesinc.com/products/anti-snapin-snapap-antibody-l8-15-75-045



Created on 11. July 2026 | All information without guarantee