

## Anti-PICK1 Antibody

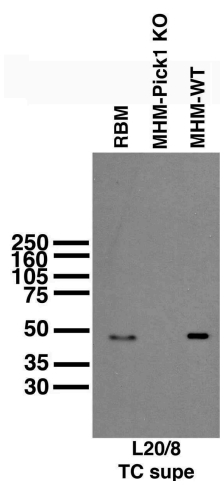


### Product Details

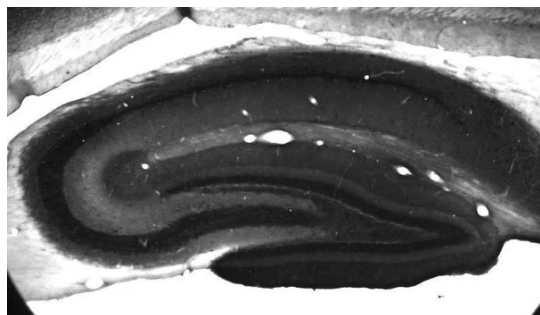
<b>Available Variants</b>	100 $\mu$ L (SKU:75-040)
<b>Conjugate</b>	Unconjugated
<b>Isotype</b>	IgG2a
<b>Clone</b>	L20/8
<b>Gene Name</b>	PICK1 PRKCABP
<b>Host Species</b>	Mouse
<b>Concentration</b>	1 mg/mL
<b>Format</b>	Purified by Protein A chromatography
<b>Physical State</b>	Liquid
<b>Buffer</b>	10 mM Tris, 50 mM Sodium Chloride, 0.065% Sodium Azide pH 7.4
<b>Production Notes</b>	Produced by in vitro bioreactor culture of hybridoma line followed by Protein A affinity chromatography. Purified mAbs are >90% specific antibody.
<b>Applications</b>	ELISA, ICC, IHC, IP, WB
<b>Species Reactivity</b>	Human, Mouse, Rat
<b>Immunogen</b>	Fusion protein amino acids 10-130 of human PICK1 (accession number AAG48152) produced recombinantly in E. Coli
<b>Specificity</b>	No cross-reactivity reported
<b>Molecular Weight</b>	45 kDa
<b>Quality Control</b>	Each new lot of antibody is quality control tested by western blot on rat whole brain lysate and confirmed to stain the expected molecular weight band.

<b>Storage</b>	Aliquot and store at $\leq -20^{\circ}\text{C}$ for long term storage. For short term storage, store at $2-8^{\circ}\text{C}$ . For maximum recovery of product, centrifuge the vial prior to removing the cap.
<b>Antibody Registry ID</b>	AB_2164544
<b>UniProt ID</b>	<a href="#">Q9NRD5</a>
<b>Country of Origin</b>	United States
<b>Shipping</b>	Shipped on ice packs
<b>Expiration</b>	24 months from date of receipt
<b>Usage Statement</b>	These antibodies are to be used as research laboratory reagents and are not for use as diagnostic or therapeutic reagents in humans.

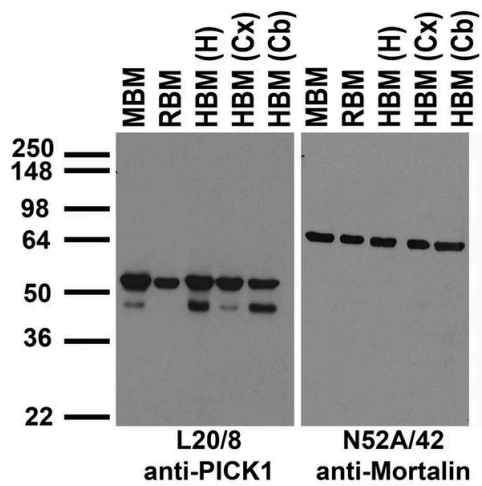
## Product Images



Immunoblot against membrane fractions from adult rat brain (RBM) and hippocampi (MHM) from wild-type (WT) and PICK1 knockout (KO) mice probed with L20/8 TC supe. Mouse samples courtesy of Richard Haganir (Johns Hopkins University, HHMI).



Adult rat hippocampus immunohistochemistry.



Immunoblot against crude membrane fractions from whole mouse (MBM) or rat (RBM) brain and from human hippocampus [HBM(H)], cerebral cortex [HBM(Cx)] or cerebellum [HBM(Cb)] and probed with L20/8 (left) or N52A/42 (right) TC supe.

Product Page URL: [www.antibodiesinc.com/products/anti-pick1-antibody-l20-8-75-040](http://www.antibodiesinc.com/products/anti-pick1-antibody-l20-8-75-040)



Created on 11. July 2026 | All information without guarantee