

# Anti-Neuropeptide Y Antibody



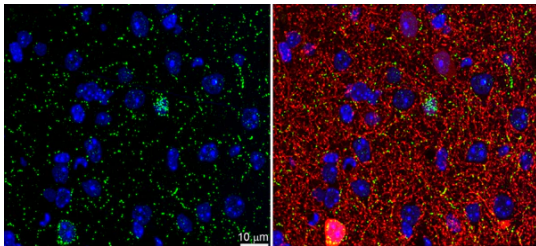
## Product Details

<b>Available Variants</b>	100 $\mu$ L (SKU:75-456)
<b>Conjugate</b>	Unconjugated
<b>Isotype</b>	IgG2a
<b>Clone</b>	L115/13
<b>Gene Name</b>	NPY
<b>Host Species</b>	Mouse
<b>Concentration</b>	1 mg/mL
<b>Format</b>	Purified by Protein A chromatography
<b>Physical State</b>	Liquid
<b>Buffer</b>	10 mM Tris, 50 mM Sodium Chloride, 0.065% Sodium Azide pH 7.125
<b>Production Notes</b>	Produced by in vitro bioreactor culture of hybridoma line followed by Protein A affinity chromatography. Purified mAbs are >90% specific antibody.
<b>Applications</b>	AT, ELISA, ICC, IHC
<b>Species Reactivity</b>	Human, Mouse, Rat
<b>Immunogen</b>	Fusion protein amino acids 28-97 (all but signal peptide) of human NPY (accession number P01303) produced recombinantly in E. Coli
<b>Specificity</b>	No cross-reactivity reported
<b>Molecular Weight</b>	11 kDa
<b>Quality Control</b>	Each new lot of antibody is quality control tested by IHC on either rat or mouse brain and confirmed to give the expected staining pattern.

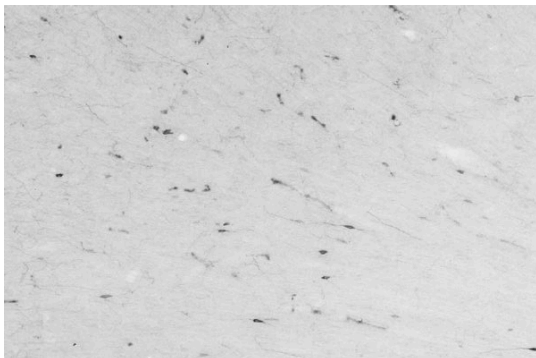
<b>Storage</b>	Aliquot and store at $\leq -20^{\circ}\text{C}$ for long term storage. For short term storage, store at $2-8^{\circ}\text{C}$ . For maximum recovery of product, centrifuge the vial prior to removing the cap.
<b>Antibody Registry ID</b>	AB_2651168
<b>UniProt ID</b>	<a href="#">P01303</a>
<b>Country of Origin</b>	United States
<b>Shipping</b>	Shipped on ice packs
<b>Expiration</b>	24 months from date of receipt
<b>Usage Statement</b>	These antibodies are to be used as research laboratory reagents and are not for use as diagnostic or therapeutic reagents in humans.

---

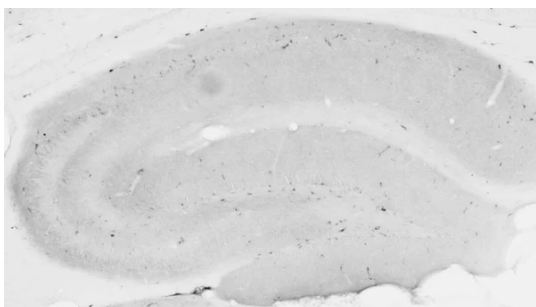
## Product Images



Array tomography immunofluorescence of Lowicryl-embedded sections from adult mouse cortex layer 2/3 with L115/13 (green), GABA (red) and DAPI (blue). Volume reconstruction of 35 serial 70 nm sections show two NPY-positive neurons with varying levels of GABA reactivity, as well as some NPY-reactive axonal varicosities. Images courtesy of Kristina Micheva (Stanford).



Adult rat cortex immunohistochemistry.



Adult rat hippocampus immunohistochemistry.

---

Product Page URL: [www.antibodiesinc.com/products/anti-neuropeptide-y-antibody-l115-13-75-456](http://www.antibodiesinc.com/products/anti-neuropeptide-y-antibody-l115-13-75-456)



Created on 11. July 2026 | All information without guarantee